

# Mazda MX-5

---

MX-5 1.8i Convertible  
MX-5 1.8iS Convertible



**mazda**



# The true modern classic

The Mazda MX-5 first appeared in the UK in 1990 like a refreshing breeze from the past. Turning heads. Stirring passions. And persuading enthusiasts everywhere that in terms of sheer fun and exhilaration, there is still nothing to compare with an open top sports car.

The excitement the Mazda MX-5 generated is hardly surprising. For it embraced special values that many feared had vanished for good. And in doing so symbolises Mazda's uncompromised belief in what a sports car should be: affordable fun.

The original Mazda MX-5 concept was based on a single thought: that the ideal man/machine relationship should be similar

to that between a horse and rider; instinctive, immediate; tactile; moving together as one.

To maintain this driving enjoyment, every aspect of the new Mazda MX-5 1.8i and 1.8iS has been judged in terms of how it would enhance the driving experience. For this lightweight sports car, a front engine rear-wheel drive layout was still the natural choice and true to the sports car tradition, there's not an ounce of excess weight on either model.

Although the new Mazda MX-5 1.8i and 1.8iS models embody the classic formula for driving fun, there's nothing "retro" about the technology that has gone into them.



*Featured here in British racing green the new Mazda MX-5 1.8i entry level model.*



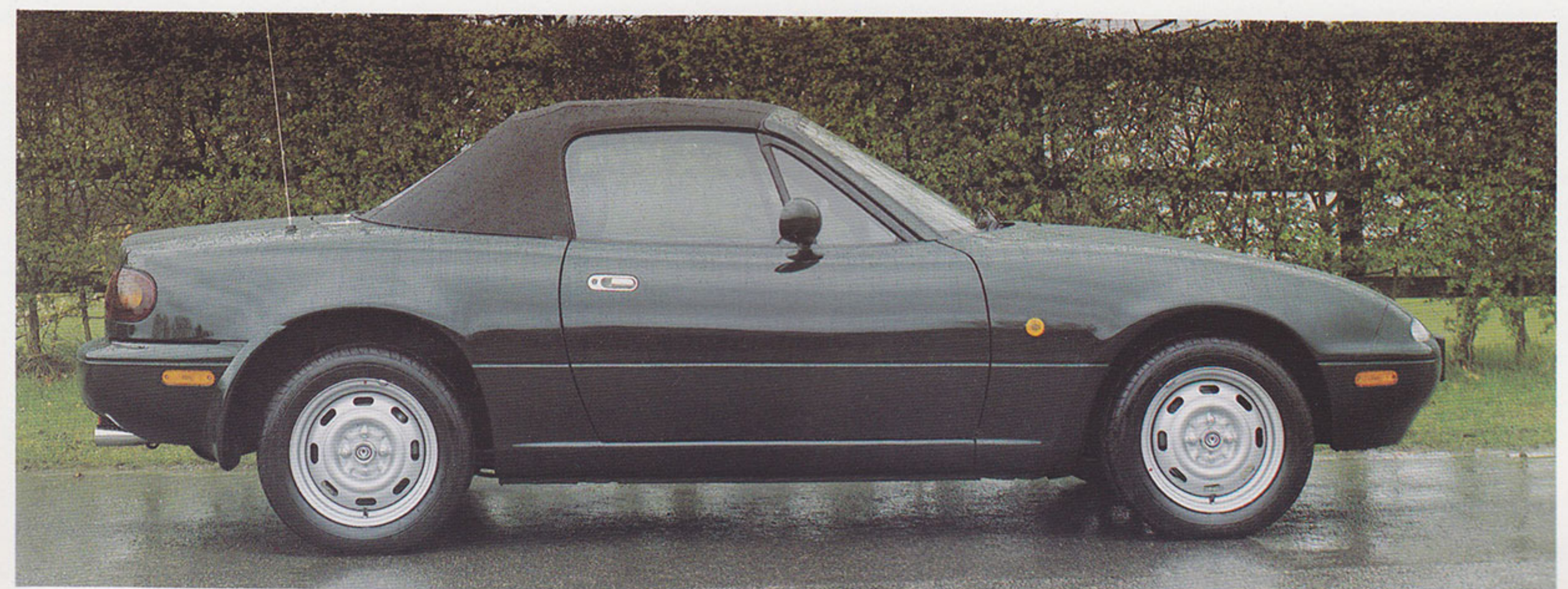
From the spirited 16 valve 1.8-litre fuel-injected DOHC engine to the ultra-rigid monocoque chassis, modern technology plays a major role. Enhancing safety and reliability. And making the driving experience all the more satisfying.

Wrapped in sensuous bodywork, and wearing a new style of ultra-light aluminium wheels, there's no mistaking the new Mazda MX-5 1.8iS for anything other than what it is: a purpose-built modern sports car that is designed to provide excitement from the moment you turn the key.

The traditional British climate doesn't put a damper on the fun. The strong weather-proof convertible top can be raised and secured quickly and easily by either driver or passenger.

The spirit of the classic lightweight sports car lives on in the new Mazda MX-5 1.8i and 1.8iS models, and continues to evolve in a natural way. There is no other car to challenge its claim as the true modern classic as it takes its place in the hearts of today's sports car enthusiasts everywhere.

*The sleek profile of the new Mazda MX-5 1.8i model will appeal to sports car lovers everywhere.*





# The new Mazda MX-5 1.8i





# Designed to feel just right



*The cockpit of the new Mazda MX-5 1.8iS. standard equipment includes: driver's side airbag, new design seats, power windows, immobiliser and RDS radio cassette unit.*

From the moment you first slip behind the steering wheel, it's obvious that considerable thought has gone into creating the new Mazda MX-5 1.8-litre models. Everything in the cockpit has been designed for the driver to provide a reassuring feeling of confidence, command and control.

The dashboard houses a cluster of no-nonsense instruments with white-on-black analogue gauges, ringed in classic chrome legible at a glance without being distracting.

Your fingers easily grip the thick steering wheel whilst your body settles quickly into the embrace of the new design sports seats. These have been designed to provide more than just comfort, communicating the movement of the car and keeping



*The traditional classic look of the new Mazda MX-5 1.8i is reminiscent of sports cars of yesterday.*

occupants fully supported as the car powers out of a sharp turn.

Your hand will naturally fall to the short-throw gear stick which is coupled to the close-ratio gearbox for precise changes. Although it hardly makes a sound, you can sense the positive easy mechanical movement throughout the gears. The adoption of a double cone synchroniser for second gear now makes changing up and down incredibly smooth.

The obsession with making the new Mazda MX-5 1.8-litre models feel just right is not limited to the controls, but is continued throughout the vehicles' interior. A stylish and practical seat fabric covers the seats and door panels. Large expanding door storage pockets, handy for keeping oddments, are incorporated into both driver and passenger doors. The boot is carpeted and now trimmed throughout to protect luggage from scratching or damage. The lockable glove box and centre console storage compartments keep valuables safe and secure.

The seat-belt anchor points are mounted directly to the seats for increased comfort so that no matter how far forward or backward the seats are adjusted, the seat belts will always fit easily across the driver and passenger.

As the ultimate wind-in-the-hair affordable sports car, the new Mazda MX-5 is more than a machine - it's an expression of personal taste. Everything that meets the eye from the bonnet power bulge to the new alloy wheels (1.8iS only) is functional and aesthetically pleasing. Defined by sporting tradition to quicken the pulse and provide the modern classic Mazda MX-5 driving experience.



*The short-throw gear stick is coupled to a close ratio gearbox for precise changes.*



*The alloy wheels on the new Mazda MX-5 1.8iS are protected by standard equipment locking wheel nuts.*



*New style alloy wheels 14 x 6.0JJ are standard equipment on the new Mazda MX-5 1.8iS model.*



*The smooth, light action of the brake and clutch complement the precise feel of the short throw gear stick.*



*The interior of the new Mazda MX-5 1.8iS model is further protected by the use of stylish stainless steel scuff plates and door speaker trim.*



**The new Mazda MX-5 1.8iS**



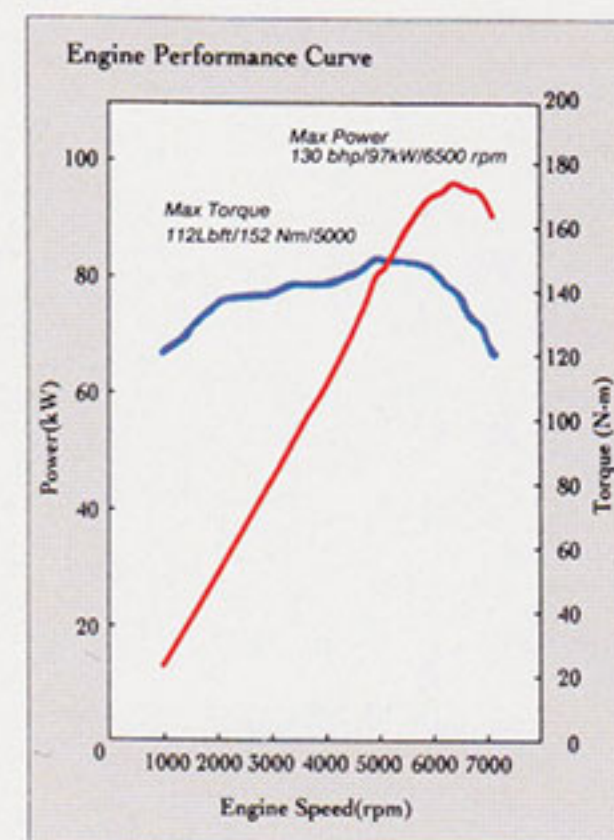


# Power to stir your emotions

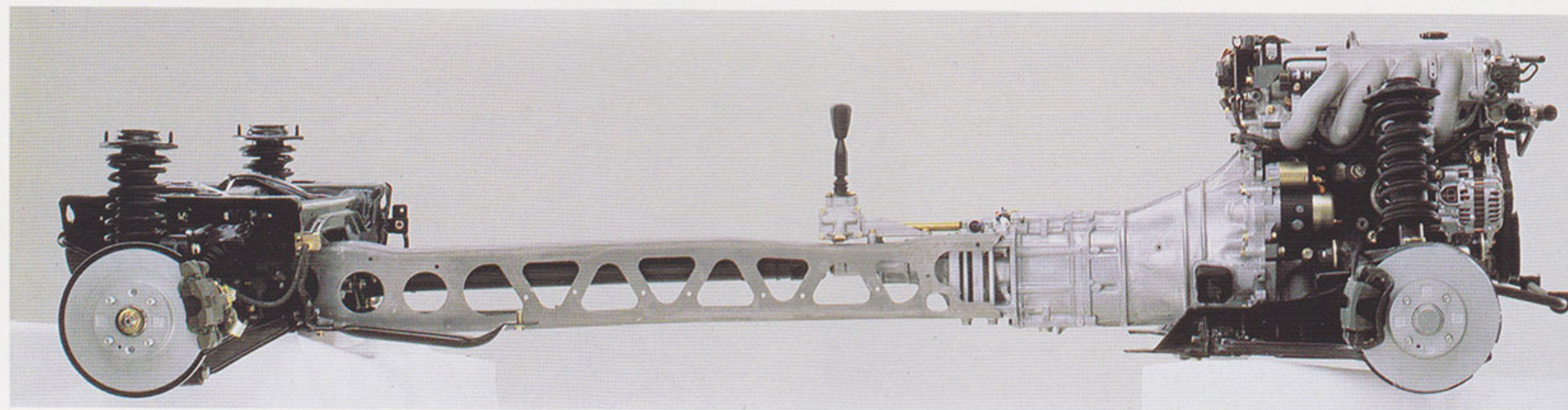
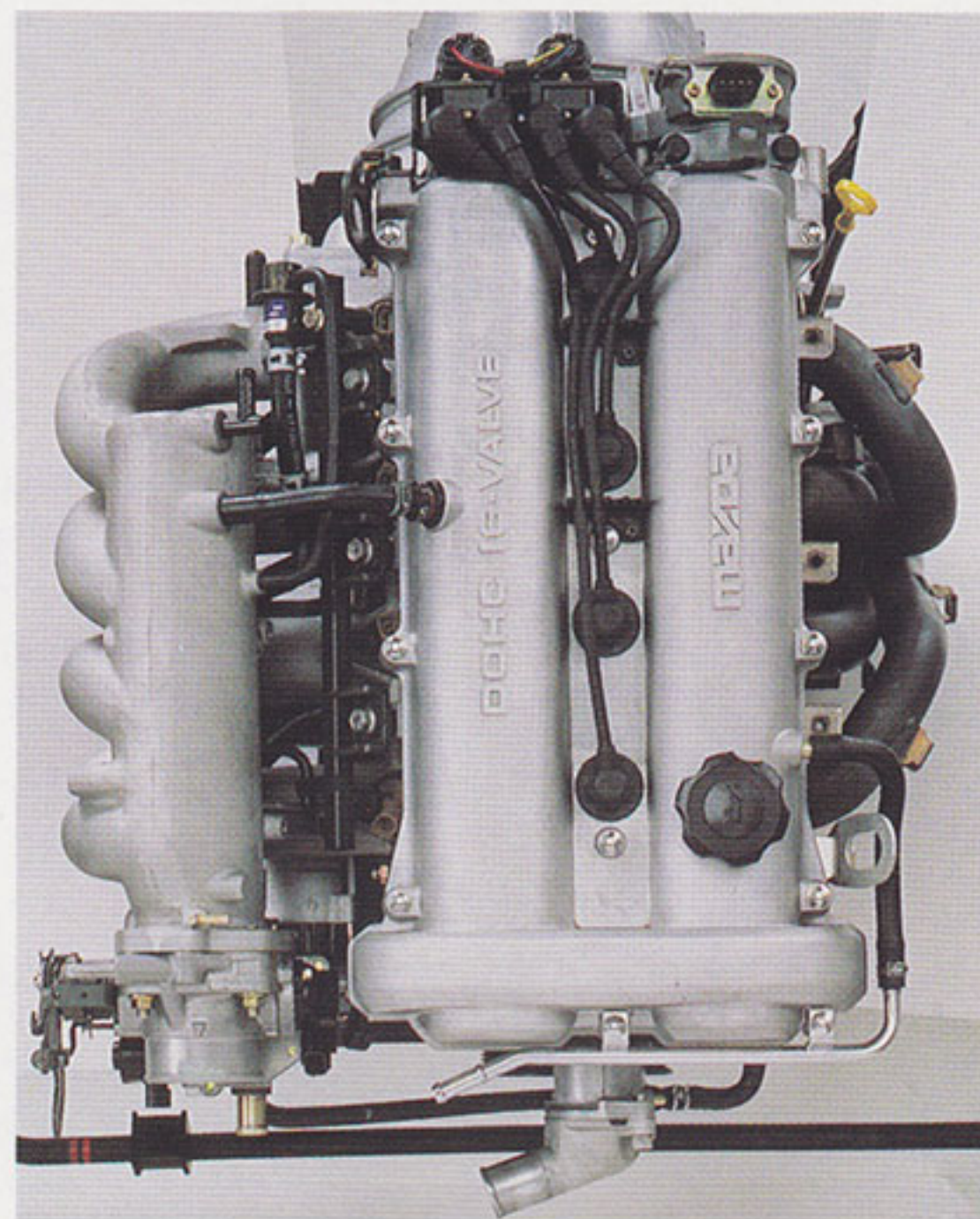
From your first encounter, you'll remember the sound of the new Mazda MX-5 1800cc fuel-injected 16-valve DOHC engine.

This new engine unit provides quick throttle response thanks to a race-bred induction system, distributorless ignition, and a lightweight flywheel. Furthermore, it offers a smooth, linear power delivery all the way to the 6500rpm redline as well as ample low-to-mid-range torque. Pentroof combustion chambers and hollow camshafts are just a few of the technical

*Torque curves that translate into smooth acceleration and linear power all the way to the vehicle's redline.*



*The 1800cc DOHC engine features electronic fuel injection and tuned stainless steel "headers".*



*\* The Power Plant Frame (PPF) locks the engine, transmission, and differential into a single rigid unit to ensure a complete feeling of togetherness and a noticeable lack of drivetrain shock and vibration.*

enhancements concealed under the cross-flow aluminium cylinder head.

Helping the engine to breathe deeply is a tuned exhaust system with stainless steel "headers".

Harnessing the power of this spirited engine is a special 5-speed, close ratio manual transmission. The compact gear stick linkage has quick, easy movements to allow you to move through the gears with clockwork precision.

To lock the Mazda MX-5's drivetrain in rigid alignment, Mazda created an ingenious, aluminium structure called a Power Plant Frame (PPF). This is an evolutionary development of the classic front-engine rear-wheel drive layout, only used in the world's most exotic cars. During hard acceleration or braking, the PPF minimises vibration and driveline shudder and slack.

After driving the new Mazda MX-5 you'll never forget the way it feels.

# Safer for your peace of mind

Although Mazda intended to make the new Mazda MX-5 1.8i and 1.8iS models incredibly fun cars to drive, we didn't overlook the aspect of safety. In fact, we believe that safety features enhance driving pleasure by providing you and your passenger with greater peace of mind.

Exhaustive simulation tests were conducted in the event of a collision. Data collected was fed back to the body engineering group. In the end, they created a body that not only looks beautiful, but functions well if required to do so.

The same highly rigid structure that contributes to the excellent new Mazda MX-5 handling and steering response, also serves to protect the occupants. Stress-carrying members of the monocoque body were made as rigid as possible. The deep cross-sections of the side sills and the large central tunnel provide critical reinforcement around the cockpit. Even the floor panel is designed to function as a stress-bearing component. In the event of a collision, the force of impact is distributed through the



*Impact-absorbing "crushable zones" combined with strong reinforcement around the cockpit to enhance occupant safety. (1.8i and 1.8iS).*



*High-tensile steel side door beams provide added cockpit protection (1.8i and 1.8iS).*



frame of the body and crushable front and rear sections of the car.

Energy-absorbing bumpers on both ends of the vehicle help minimise body deformation in the event of a front or rear collision. To provide an added measure of protection, the doors have been reinforced with high-tensile steel side door beams.

Flame retardant materials are used in the upholstery and trim. And the Mazda MX-5 1.8iS model standard equipment includes a full size driver's side SRS airbag.



*The new Mazda MX-5 1.8iS is equipped as standard with a full size driver SRS airbag that emerges from the centre of the steering wheel to cushion the driver's upper body in the event of a serious frontal collision.*

*Both the new Mazda MX-5 1.8i and 1.8iS models include a vehicle immobiliser system as standard equipment.*



*The new Mazda MX-5 standard immobiliser system is passive armed. To disarm before driving, touch the touch key against the dash mounted receptacle pad.*



# On the open road



Countless hours have been spent in development and evolution of the new Mazda MX-5 1.8-litre to make it the car it is today. To say that it handles well is an understatement. The taut handling feel and exceptional cornering ability will leave you breathless with sheer exhilaration.

The engineers at Mazda have worked hard to improve this fundamental Mazda MX-5 quality. Implicit in the Mazda concept of "unity between horse and rider" is the idea that a sports car must move instinctively like an extension of the driver's thoughts. This responsive, interactive feeling is an essential part of the new Mazda MX-5 experience, the result of which is now being experienced on open roads and racing circuits around the world.

*A cockpit brace bar is located behind the seats to provide increased body rigidity in the central part of the body and further improve side impact crash resistance.*



No matter how hard you push it, the new Mazda MX-5 remains rock-solid, with a complete elimination of body flex, providing improved handling and ride comfort on the road. The new Mazda MX-5's monocoque body shell was subjected to an exhaustive analytical program. Stress was measured at 8,900 separate points using Dynamic Model Analysis (DMA) and Finite Element Method (FEM) with a super computer performing intensive calculations. Weight was cut, strength was added. Stress-carrying members were made as straight as possible, and reinforced by the use of larger cross sections. The result is one of the lightest and most rigid sports car bodies ever created.

Materials were carefully selected. High-tensile steel was employed for key structural components while aluminium was chosen for non-stressed parts like the boot and bonnet, and the energy-absorbing bumpers are made from resilient lightweight plastic.

We positioned the engine behind the front axle and the fuel tank behind the seats, while the spare tyre is located above the rear axle in the boot area. This concentrated weight towards the middle of the car and lower to the ground.

With minimal yaw and pitch, and nearly ideal 52:48 front/rear weight distribution, stability and control are dramatically improved. Hugging the curves or cruising at sustained high speeds you can now feel the difference.

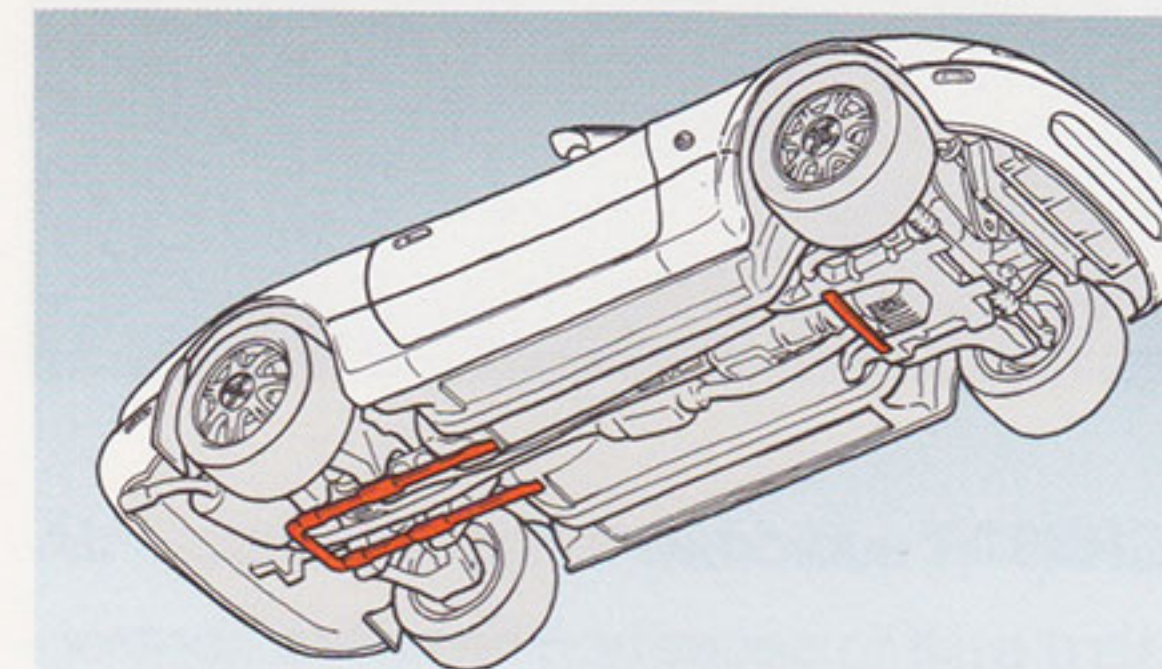
Like a true thoroughbred, the new Mazda MX-5 1.8-litre models exhibit incredible road feel. Rack-and-pinion steering tells you exactly what your wheels are doing, and respond quickly and positively to every turn. The Mazda MX-5 1.8iS model is also fitted with power assisted steering as standard. The new Mazda MX-5 1.8i model has manual steering and is not power assisted. This requires even more driver involvement and rewards the enthusiastic owner with true road feel.

All four wheels are independently suspended on double wishbones, coil springs, and low-pressure gas-filled shock absorbers. This classic suspension set-up provides peak lateral rigidity and maintains optimum contact between the tyres and the road surface, attaining near-perfect zero camber change. Special attention has been paid to the shock absorbers which are

calibrated to suppress body roll in the early stages of cornering. Redesigned front and rear anti-roll bars and a quartet of suspension performance rods together with a Cockpit Brace Bar further enhance the Mazda MX-5's legendary handling and safety.

The result of all this tuning is a suspension system that achieves the optimum balance between road holding, handling and ride comfort.

Power assisted 10" disc brakes match the power and torque of the new Mazda MX-5 1.8i and 1.8iS models. Up front, the discs are ventilated and because the diameter of both the front and rear discs is larger the



*A U-shaped configuration of performance rods on the left, right and rear of the powertrain increase rear body rigidity. The front performance rod enhances torsional rigidity.*

effective brake capacity has also been increased. This provides greater overall thermal capacity and less susceptibility to fade.

For those who want the ultimate in ride stability and steering control under hard braking, the Mazda MX-5 1.8iS model is equipped as standard with a 4-wheel anti-lock braking system (ABS).





# Comfort and Security

The new Mazda MX-5 1.8iS is equipped as standard with the Clarion CRX87R radio cassette unit. This advanced audio features full RDS EON and controls the optional Finish Line 6-disc autochanger.



The CRX87R audio has a high level of standard built in security. The entire control panel can be detached at a press of a button to be stored away from the vehicle in the carrying box provided.

The CRX87R audio has a built in digital RDS data clock display. To tell the time simply press the button and the digital time display will appear. To release the time display, press the preset radio station button to display the radio station name or frequency.



Optional Finish Line 6-Disc CD autochanger



Detachable control panel



Digital RDS data clock display

**Note:**  
The new Mazda MX-5 1.8i model is not fitted with an audio system as standard equipment

# Accessories for your new Mazda MX-5

Mazda has developed a range of tailor-made quality accessories to enhance your new Mazda MX-5, adding individuality and a unique style.

The accessories shown are a selection from a wide range of distinctive options including audio upgrades, air conditioning and security systems to increase your vehicle's versatility, comfort and protection.



Audio upgrades



Alarm system



Air conditioning

**Air Conditioning.** All year air conditioning control at your fingertips, exclusively designed to integrate perfectly with your car's heating and ventilation system, keeping you cool in the summer and your windows clear of condensation in the winter.

**Audio Upgrade.** The latest technology allows you to create exceptional sound quality in your Mazda with a choice of audio upgrades. For MX-5 1.8iS models a 6-disc autochanger can be easily installed with the standard audio.

**Alarm System.** Protect your treasured possession with a Finish Line alarm system, operated by a remote controlled hand set, offering advanced design technology to provide an effective deterrent against theft. The Finish Line alarm system is designed to integrate with the standard fitment immobiliser, increasing the overall level of vehicle security for your new Mazda MX-5.



# Accessories for your new Mazda MX-5



Rear Boot Spoiler



Luxury Car Mat Set



Luxury Boot Mat



Alloy Wheel 14 X 6.0 JJ



Casual Jackets



Detachable Hard Top



Detachable Hard Top Storage Cover



Wall Mounted Brackets



Fog Lamp Set



Deck Rack, Chrome



Deck Rack, Black



Scuff Plate Set



Colours and Upholstery

EXTERIOR COLOURS

Classic Red	
SU	
British Racing Green	
HU	
Laguna Blue M	
6W	
Silver Stone M	
3L	
Brilliant Black	
PZ	
Chaste White	
PT	

M - Metallic MC - Mica

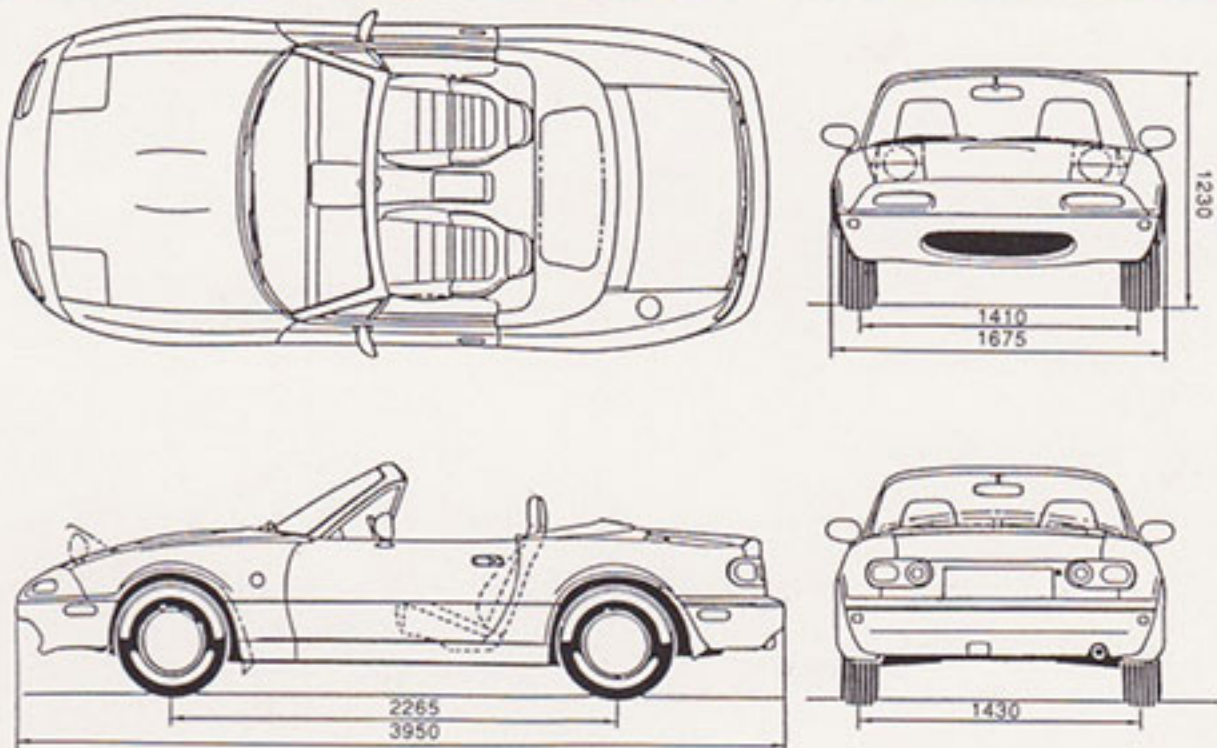
STANDARD INTERIOR TRIM

Black Cloth Trim		
† Optional Light Grey Leather (4181)		
† Optional Taupe Leather (4186)		
† Optional Black Leather (4108)		
† Optional Anthracite Leather (4201)		
† Optional Mist Leather (3672)		
† Optional Tan Leather (4311)		

† Connolly Leather trim available as a customer option at extra cost

EQUIPMENT LIST	MX-5 1.8i	MX-5 1.8iS
EXTERIOR		
Laminated Windscreen	O	O
Intermittent Wipers - Front	O	O
Retractable Halogen Headlamps	O	O
Rear Fog Lamp	O	O
Colour-keyed Bumpers and Outer Mirrors	O	O
Bright Finish Door Handles	O	O
Outer Mirrors	Manual	Electric
Remote Fuel Lid Opener	O	O
Remote Boot Lid Opener	-	O
Colour-keyed Mud Guards - Rear	O	O
Colour-keyed Mud Guards - Front	-	O
Front Number Plate Holder	O	O
Audio Antenna	Manual	Electric
Manual Folding Black Canvas Soft Top	O	O
Black Canvas Hood Cover	O	O
Suspension Brace Bar	O	O
Single Exhaust Tailpipe	O	O
Tyres: P185/60 R14 82H Steel Radials	O	O
Alloy Wheels - 14 x 6.0 JJ	-	O
Steel Wheels - 14 x 5.5 JJ	O	-
Security Locking Wheel Nut Set	-	O
Temporary Spare Tyre - T115/70D14	O	O
*Grade Badge 1.8i / 1.8iS (Vehicle Rear)	D/O	D/O
INTERIOR		
Tachometer	O	O
Panel Light Control	-	O
Driver's Side Full Size SRS Airbag	-	O
Leather Steering Wheel	-	O
Urethane Steering Wheel	O	-
Urethane Gear Shift Knob	O	O
Driver & Passenger Door Pockets	O	O
New Design Cloth Covered Bucket Seats	O	O
Height Adjustable Headrests	O	O
Power Assisted Steering	-	O
Passenger Rear Seat Map Pocket	O	O
Front Seat Belts - 3 point ELR x 2	O	O
Security Window Etching	O	O
Footwell Interior Map Lights	O	O
Power Windows	-	O
Vinyl Sunvisor (Passenger side vanity mirror)	O	O
Driver's Foot Rest	O	O
Detachable Fascia RDS Radio Cassette Unit	-	O
2 Speaker Audio System and Harness	O	O
Digital Clock (Integral with standard audio unit)	-	O
Heater	O	O
Cigar Lighter and Illuminated Ashtray	O	O
Locking Glovebox	O	O
Locking Centre Console	O	O
Stainless Steel Scuff Plates	-	O
Stainless Steel Door Speaker Trim	-	O
Anti-Lock Braking System (ABS)	-	O
Side Impact Protection Door Beams	O	O
Security Coded Window Etching	O	O
Vehicle Immobiliser System	O	O
O = Standard D/O = Delete Option - = Not Available		

SPECIFICATIONS		MX-5 1.8i	MX-5 1.8iS
DIMENSIONS & WEIGHT			
Overall Length	(mm)	3950	3950
Overall Width	(mm)	1675	1675
Overall Height	(mm)	1230	1230
Wheelbase	(mm)	2265	2265
Track Front	(mm)	1410	1410
Track Rear	(mm)	1430	1430
Kerb Weight Approx	(Kg)	990	1018
Weight Distribution:	Front/Rear	52 : 48	
ENGINE			
Type	In-line 4-Cylinder DOHC 16-valve		
Bore x Stroke	(mm)	83 x 85	
Displacement	(cc)	1839	
Max Power Output DIN	130 bhp/97kW/6500 rpm		
Max Torque DIN	112/Lbft/152Nm/5000 rpm		
Compression Ratio	9.0 : 1		
Fuel Supply System	Multipoint Fuel Injection		
Exhaust System	Semi-Dual System/Catalytic Converter		
Fuel Tank Capacity	(litres)	48	
Fuel Used	Unleaded only MIN 91 RON		
DRIVETRAIN			
Clutch Type	Hydraulically operated Single Dry Plate (215 x 150)		
Transmission Type	Manual 5 Speed		
Gear Ratio	1st	3.136 : 1	
	2nd	1.888 : 1	
	3rd	1.330 : 1	
	4th	1.000 : 1	
	5th	0.814 : 1	
	Rev	3.758 : 1	
Final Gear Ratio	4.100 : 1		
Chassis and Suspension			
Frame	Steel Monocoque		
Suspension Type Front :	Independent double wishbones with Anti Roll Bar		
Suspension Type Rear :	Independent double wishbones with Anti Roll Bar		
Steering Rack & Pinion:	Manual	Power Assisted	
Steering Wheel Turns (lock to lock)	3.3	2.8	
Max. Turning Circle (wall to wall)	9.8m		
Turning Circle	9.14m		
Brakes Front	255mm Ventilated Disc		
Brakes Rear	251mm Solid Disc		
Wheels	Steel 14 x 5.5JJ	Alloy 14 x 6.0JJ	
Tyres	P185/60 R14 82H Steel Radial		
Temporary Spare Tyre	T115/70 D14		
Handbrake	Mechanical on rear wheels		
PERFORMANCE			
Max speed mph (km/h)	123 (197)		
0-62 mph (100km/h)	8.6s		
Fuel Consumption mpg (L/100 km)			
Urban Cycle	28.2 (10.1)		
Constant 56 mph	40.9 (6.9)		
Constant 75 mph	31.0 (9.1)		



\*MX-5 1.8-litre model grade badge will not be fitted at customer request.



## Finish Line

### Accessories

There is a range of Mazda Finish Line accessories for each model in the Mazda range. For more information contact your local Mazda dealer.

## Mazda Approved

### Motor Insurance

Complete quotations are available through the dedicated Mazda Insurance Scheme. Full details are available by telephoning 0645 323626 or by speaking to your local Mazda dealer.

## Mazda Finance

### Finance Schemes

Offering a comprehensive range of finance schemes including:

**Elect** - the Mazda Personal Purchase Plan.

**Mazda Contract Hire** - tailored to meet your business needs.

Full details on all schemes available from your local Mazda dealer.

## Tax Free

### Personal Export, Diplomatic & Military Sales

Significant savings available for those who qualify, with schemes tailored to suit individual needs. For further information telephone 01892 502537.

## Warranty Plus

### 3 Year Cover

Every Mazda is designed and built to the highest standards of performance, comfort and reliability. For your further reassurance Mazda also offer three year/60,000 miles\* full warranty cover including Mazda European roadside assistance and a six-year anti-perforation warranty....

\* There is no mileage limit during the first year of the warranty.

## Extended

### New Vehicle Extended Warranty

At any time during the period of manufacturer's warranty you may purchase an alternative extended package. The options are on additional 12 or 24 months cover or a 'top-up' mileage facility for up to a maximum of 100,000 miles.

For further information please see your Mazda dealer or call Mazda Cars (UK) Limited on 01892 511877. Mazda Cars (UK) Limited reserves the right to introduce at any time, alterations in design or construction, changes of detail, equipment and accessories. To avoid any misunderstanding any person interested in purchasing a vehicle should enquire of a Mazda dealer as to whether there have been any material alterations since the date of issue of this brochure, March 1995.



**mazda**

Mazda Cars (UK) Ltd, 77 Mount Ephraim, Tunbridge Wells, Kent TN4 8BS. Tel: 01892 511877