



## Mazda MX-5



*ZOOM-ZOOM*



## Thrillseekers wanted.

Responsive handling, sublime curves, innovative technology and classic good looks are just a few of the things that have gone to make Mazda MX-5 the world's favourite roadster.

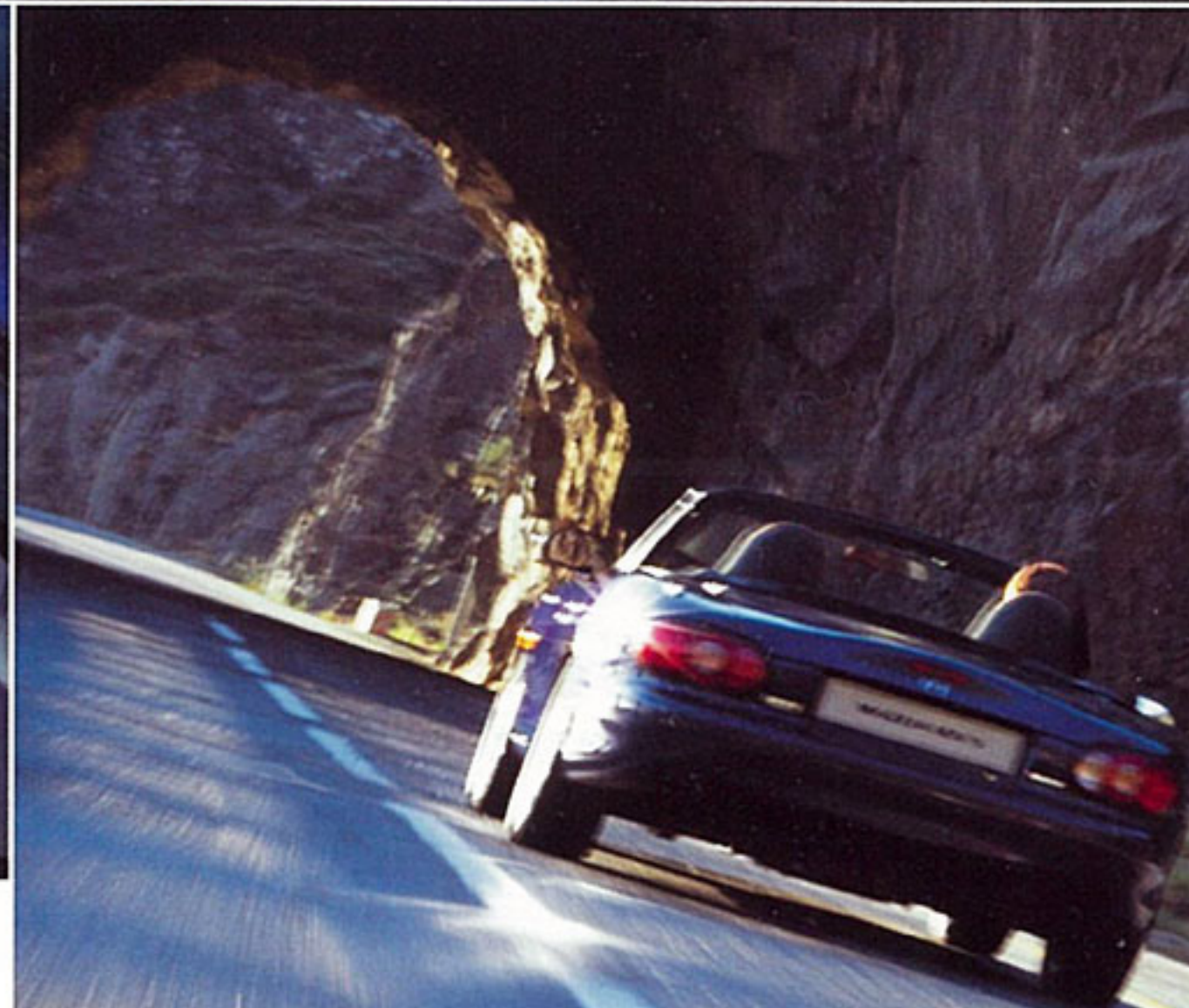
You only need to listen to the perfectly tuned sounds that exude from the Mazda MX-5's sporty exhaust, to understand how Mazda MX-5 has single-handedly revived the classic roadster legend.

Put Mazda MX-5 through its paces and you'll discover an open-top sports car that's uniquely thrilling to drive.



- 2 **Thrillseekers wanted.**  
The real roadster experience.
- 4 **Feel the rush.**  
Enjoy every turn.
- 6 **Admire the view.**  
Drive a design icon.
- 8 **Get dynamic.**  
The handling and dynamics story.
- 10 **Power to perform.**  
Engines that excite.
- 12 **Good-looking inside and out.**  
Superb styling.
- 14 **Focus on detail.**  
Form and function.
- 16 **Tough on safety.**  
First class performance.
- 18 **Make the right statement.**  
The Mazda MX-5 Icon.
- 20 **Define your style.**  
Customise and personalise.
- 22 **Mazda Credit.**





## Feel the rush.

Its aerodynamic shape is unmistakable; its proportions just right. With Mazda MX-5 your expectations are more than met. Refined double-wishbone suspension delivers agile handling, and ultra-responsive steering glides you round corners and twisting mountain roads. A compact interior adds to true roadster experience, while Mazda MX-5's deep bucket seats with integral head restraints provide comfort and support for long stints behind the wheel. Step it up a gear and feel the air flow increase as you leave the world behind.





Admire the view.



Curvy, sleek and super-streamlined, it's got a body to be admired. The design experts at the Museum of Modern Art in New York certainly seem to think so – the distinctive rear light cluster of a Mazda MX-5 sits proudly in their gallery. You too will be seduced by the car's classic good looks, from its shark-nosed bumper and long bonnet to its striking 16" alloy wheels\*.

\*Standard on Mazda MX-5 1.8i Sport.

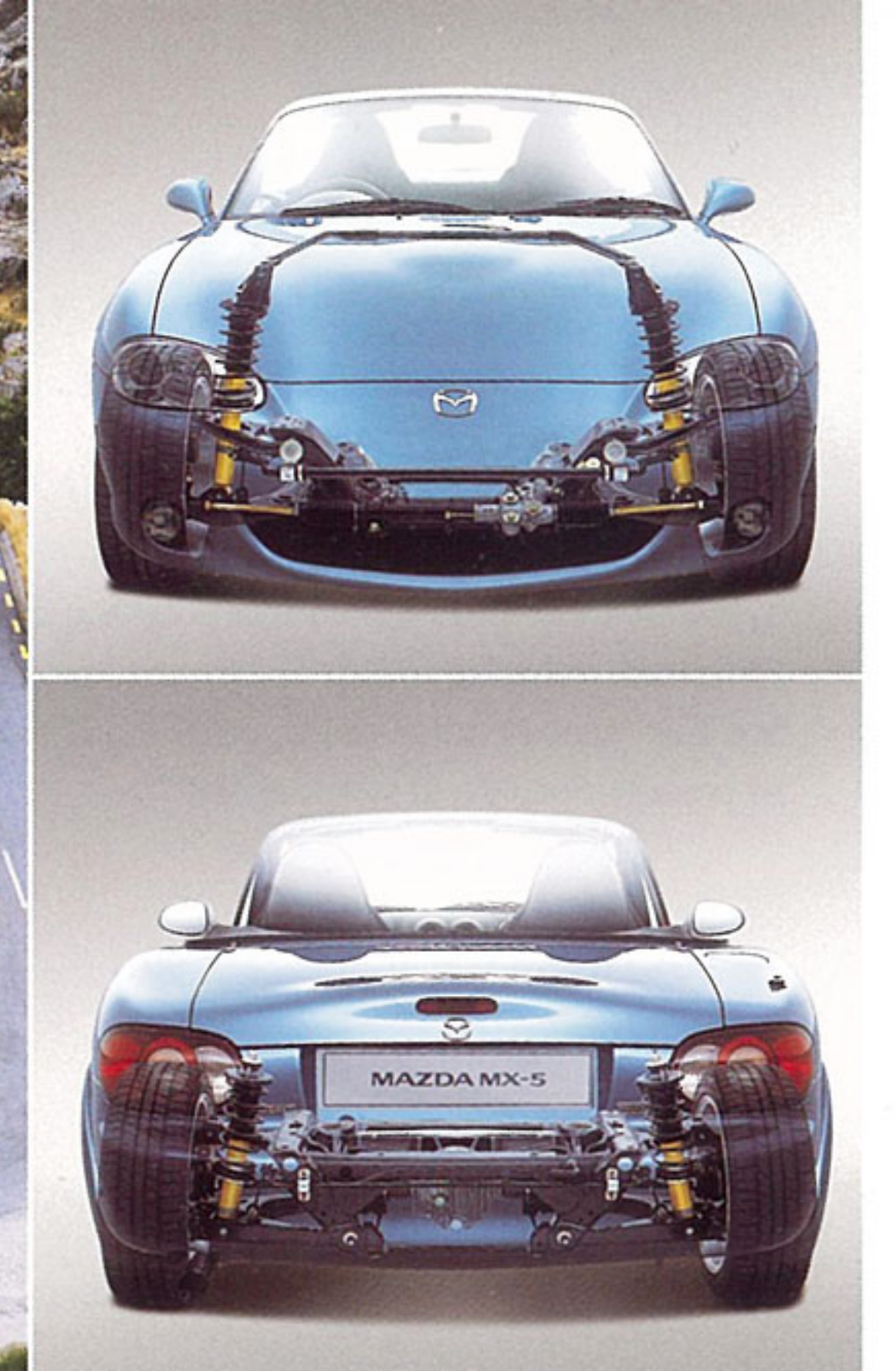


## Get dynamic.

The Mazda MX-5's legendary bend-straightening handling can be put down to perfectly balanced dynamics.

Designed exclusively as a sporty roadster, every inch of Mazda MX-5 has been crafted with open-top motoring in mind. As a result, Mazda MX-5 delivers a uniquely exciting driving experience.

From its lightweight clutch and suspension to its aluminium bonnet and flush-mounted headlights – all helping to achieve its sporty 50:50 front-to-rear weight distribution. This ideal power-to-weight ratio means poise and agility come naturally to Mazda MX-5.



### Shock absorbers:

Mazda MX-5's shock absorbers are designed to reduce driver fatigue even under the most strenuous driving conditions.

### Front suspension tower brace\*:

Bolted to each of the suspension spring towers is a steel front suspension tower brace, reducing flex in the body and improving cornering performance.

### Bilstein suspension\*:

For an even more thrilling driving experience, 1.8i Sport grade also features Bilstein sports suspension.

### Limited-slip differential\*:

Engineered with Japanese precision, the limited-slip differential ensures optimum engine power reaches the road when you're accelerating out of a tight turn.

\*Standard on MX-5 1.8i Sport.

### The package.

#### Steering:

Precise power-assisted steering provides firm control and excellent responsiveness. With a ratio of 15:1, it requires just 2.6 turns of the steering wheel from lock to lock.

#### Rear-wheel drive and balance:

It's the combination of front engine and rear-wheel drive that gives the Mazda MX-5 its perfect 50:50 weight distribution, and guarantees a fun, exhilarating ride.

#### Double-wishbone suspension:

Mazda MX-5 is fitted with sports-tuned, double-wishbone independent suspension, which allows each wheel to react independently to bumps in the road, ensuring maximum contact at all times.



Power to perform.

Power runs through Mazda MX-5's veins, it's a world-class roadster with engines to match. With two 16-valve powerplants available, this thoroughbred sports car is guaranteed to get your pulse racing and heart pounding. The 1.8i engine boasts Sequential Valve Timing (SVT); this continuously retards or advances the intake camshaft timing to boost low-speed torque and high-speed power. Unlike other roadsters, that can be left gasping for breath at higher revs, SVT allows Mazda MX-5 to breathe deeply and storm ahead.

| Engine   |             | 1.6i / 5MT  | 1.8i / 5MT  | 1.8i / 6MT  |
|--|-------------|-------------|-------------|-------------|
| Performance [hp (kW)]                              |             | 110 (81)    | 146 (107)   | 146 (107)   |
| Displacement (cc)                                  |             | 1,597       | 1,839       | 1,839       |
| Max. torque (Nm / rpm)                             |             | 134 / 5,000 | 168 / 5,000 | 168 / 5,000 |
| Top speed (mph)                                    |             | 119         | 127         | 129         |
| Acceleration (0-62 mph in secs)                    |             | 9.7         | 8.5         | 8.4         |
| Fuel consumption <sup>1)</sup><br>[mpg (l/100km)]: | Urban       | 27.7 (10.2) | 24.8 (11.4) | 23.7 (11.9) |
|  | Extra urban | 44.1 (6.4)  | 39.8 (7.1)  | 39.2 (7.2)  |
|  | Combined    | 36.2 (7.8)  | 32.5 (8.7)  | 31.7 (8.9)  |
| CO <sub>2</sub> emission <sup>1)</sup> (g/km)      |             | 188         | 210         | 215         |

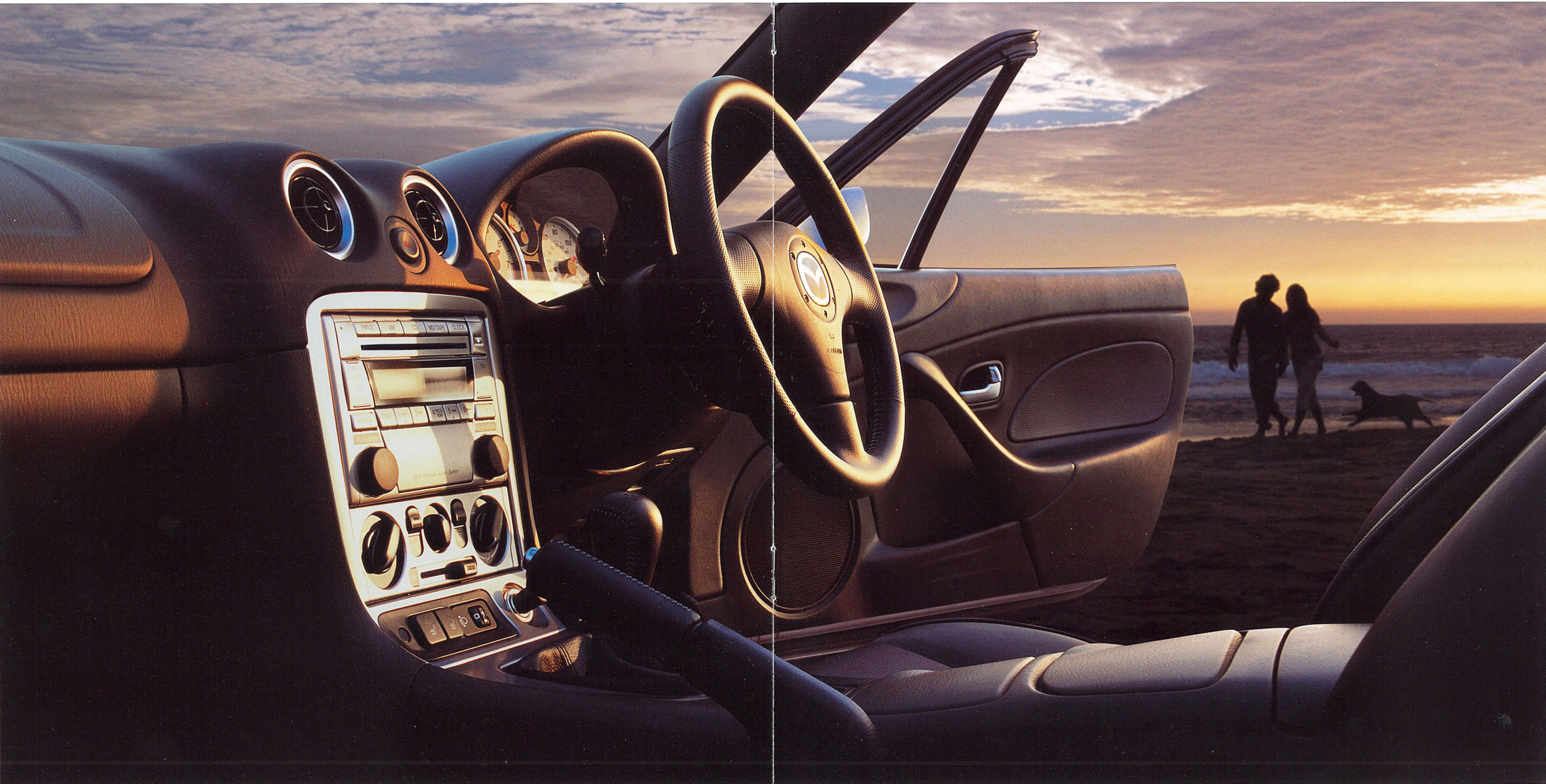
<sup>1)</sup> Fuel consumption value according to 80/1268 EWG (1999/100/EC).





Good-looking inside and out.

Everything about Mazda MX-5 screams style and craftsmanship. Take a look inside its cockpit and the first thing you'll notice is the titanium-finished centre console with its distinctive audio and climate controls and air vents. Mazda MX-5 1.8i Sport models also feature a leather-trimmed 3-spoke steering wheel, gear knob and handbrake lever and heated leather seats.





## Focus on detail.

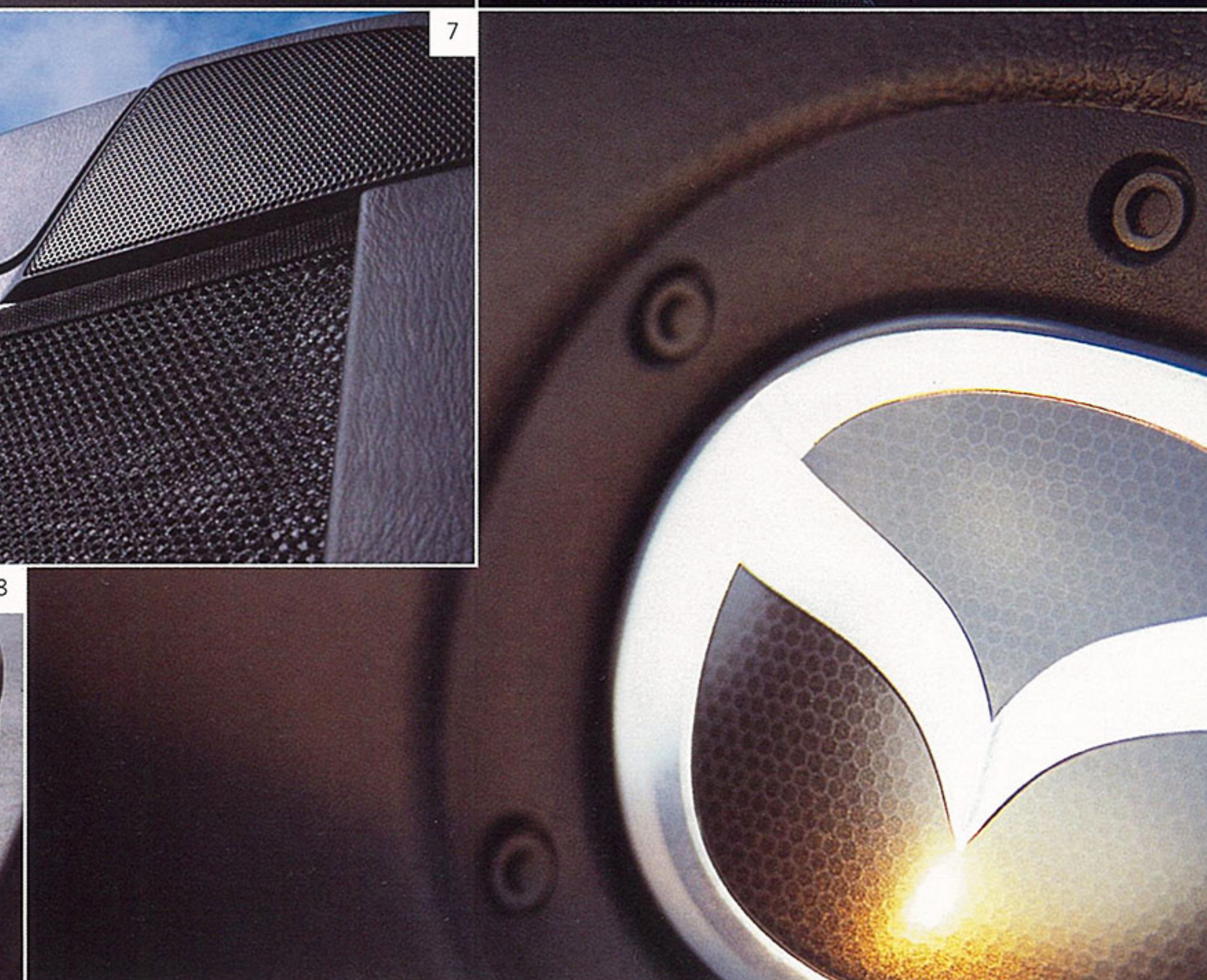
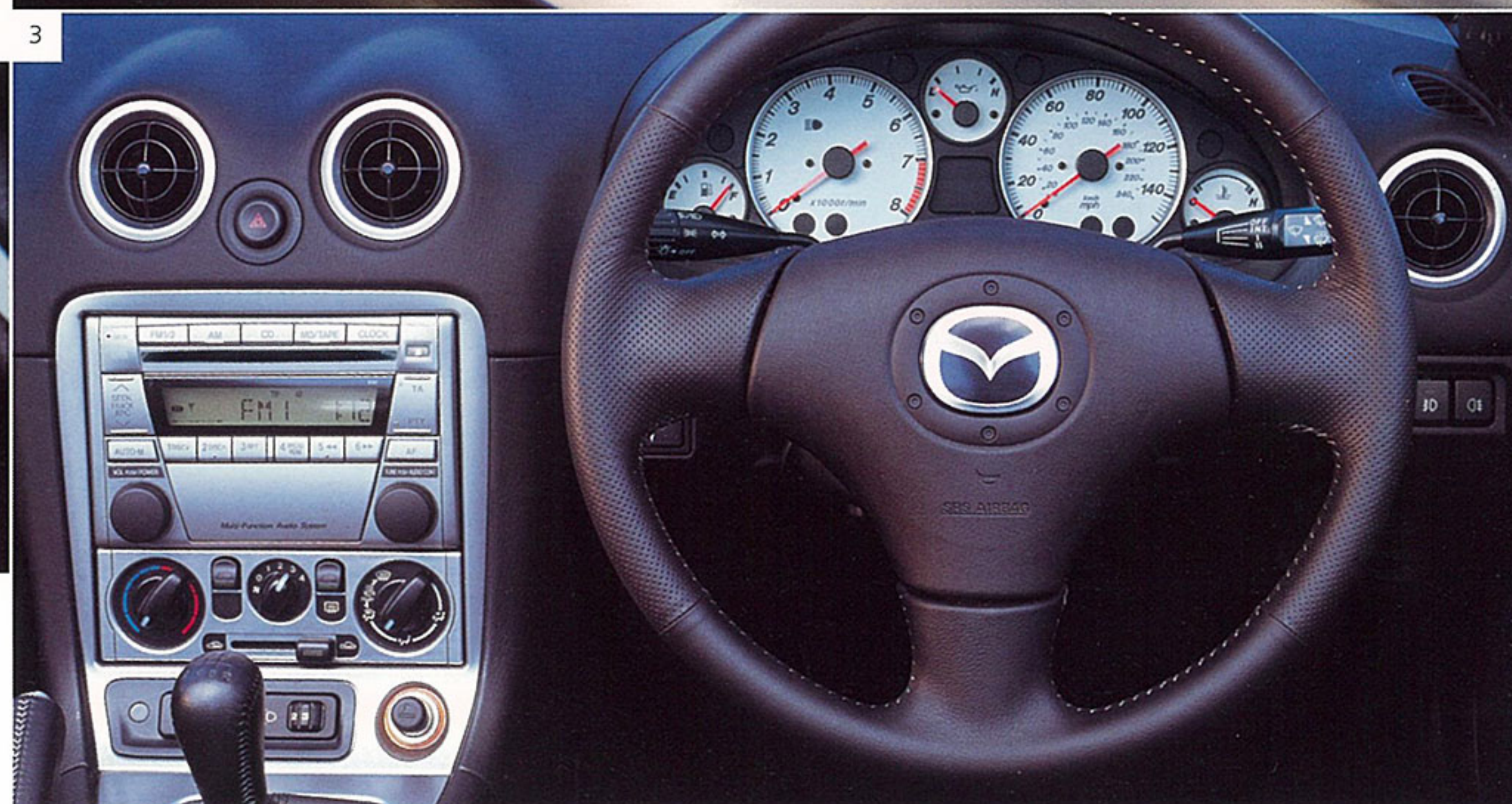
The interior of the Mazda MX-5 is designed to be functional as well as a visual feast for the eyes. Everything has been done to ensure that nothing detracts from the driving experience; well-crafted details like the fashionably designed instrument cluster feature stylish white meters with red illumination that are deeply hooded to avoid reflection, while the controls for the audio system are within easy reach. A well-proportioned glovebox boasts incorporated cup and map holders and a capacity of over six litres. And the outer mirrors are powered and heated, so you can see who you've left standing even on cold days. And then, there's the soft-top with a heated glass integral window that ensures a constant clear view even on cold days.

### Interior detail:

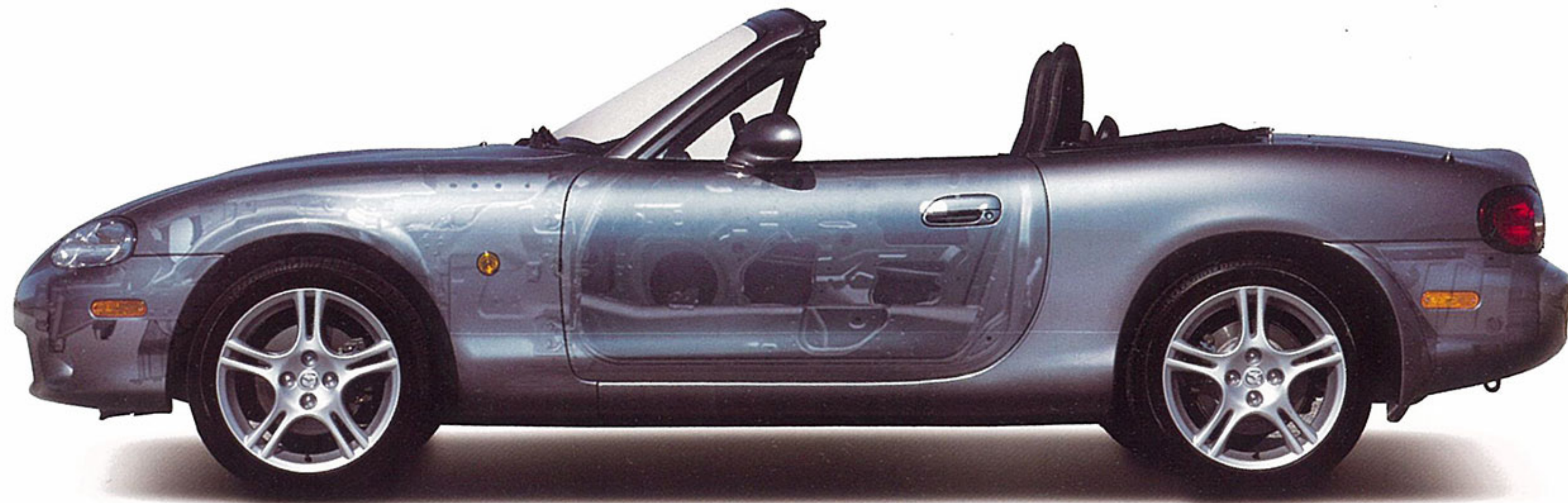
- 1 Metallic finish airvent bezels.
- 2 Leather gear knob\*.
- 3 Stylish interior with easy-to-reach controls.
- 4 Heated leather sports seats with integral headrests\*.
- 5 Powered, heated outer mirrors.



- 6 Heated glass rear window.
- 7 Wind-blocker with integral speakers\*\*.
- 8 Integrated door speakers and door pocket.







#### Body structure:

The self-supporting, rigid and torsion-resistant all-steel body with incorporated crumple zones for front and rear sections and side door beams.

## Tough on safety.

The Mazda MX-5 looks good and intends to stay that way. Agile and infinitely manoeuvrable, it is blessed with a natural ability to avoid potential hazards. The car's ultra-stiff chassis increases stability, while large front and rear disc brakes provide increased stopping power. However, should you still find an obstacle approaching too quickly, the Mazda MX-5 is endowed with ABS and Electronic Brake-force Distribution (EBD) to steer you out of harm's way.

The Mazda MX-5 also boasts a passenger airbag with an occupancy sensor in the passenger's seat, and ISOFIX child seat anchorages on the passenger side. It's due to all these safety features that the Mazda MX-5 has been awarded an impressive four stars for safety by Euro NCAP, who provide motorists with independent safety assessments of all cars sold in Europe.



#### Front airbags (incl. deactivation):

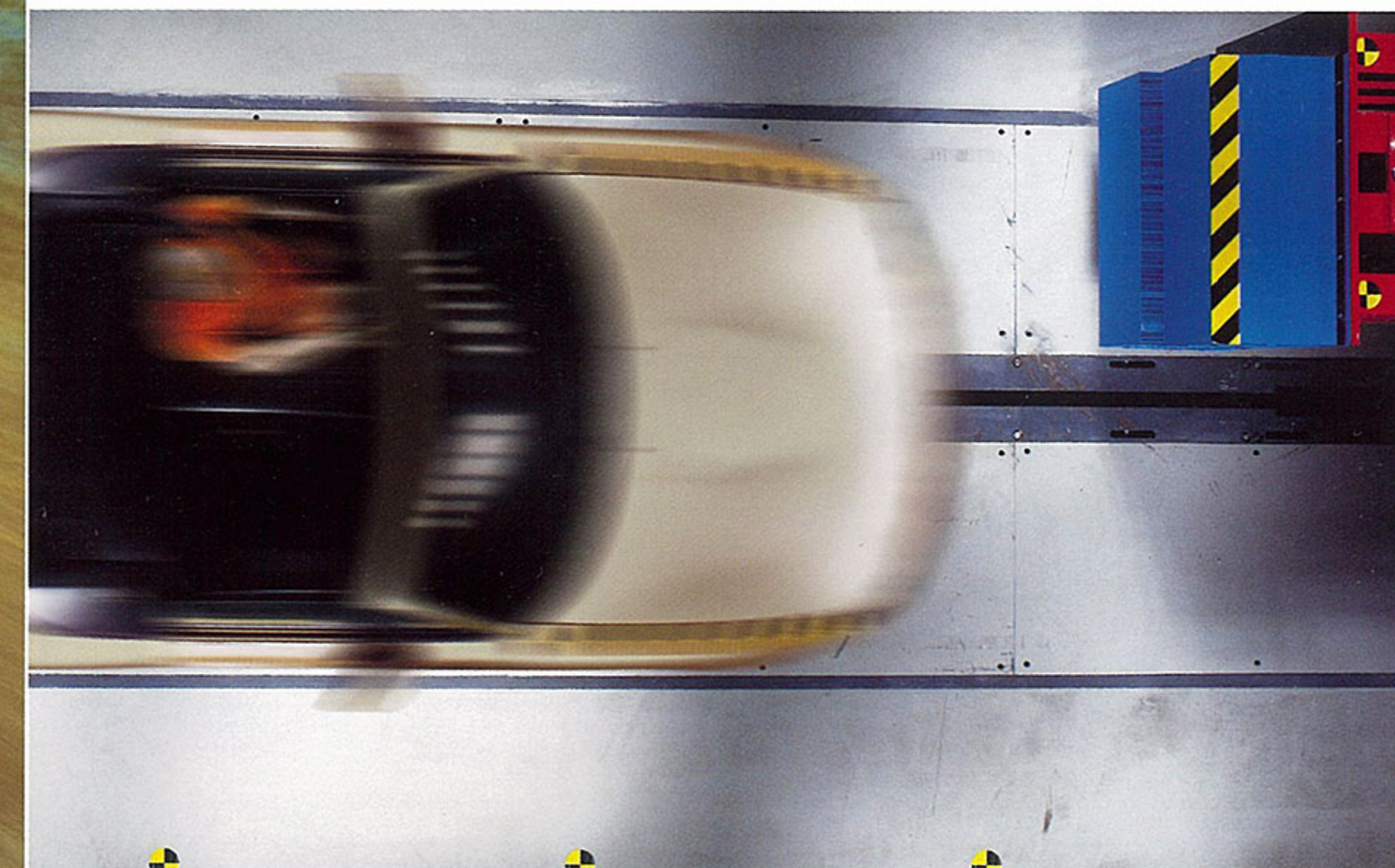
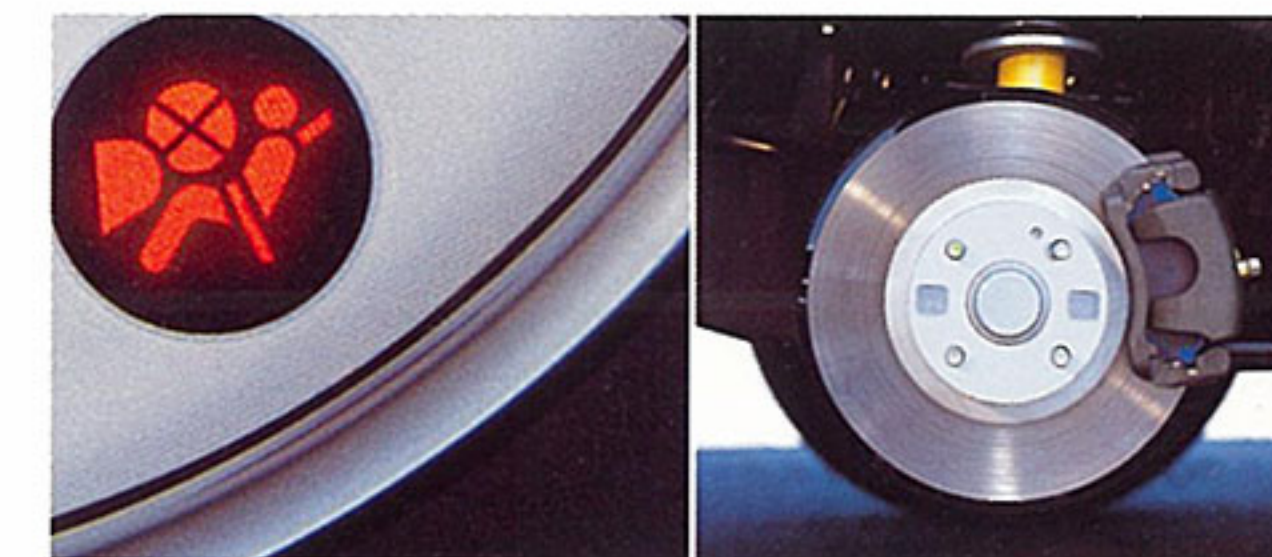
Full-size airbags for driver and passenger with airbag cut-off system on passenger side.

#### Anti-lock brakes:

A 4-sensor, 3-channel ABS with a compact, lightweight hydraulic unit is standard on Mazda MX-5.

#### Power-assisted 4-wheel disc brakes with anti-lock system:

4-wheel disc brakes are standard on the Mazda MX-5. The front discs are ventilated by internal fins.





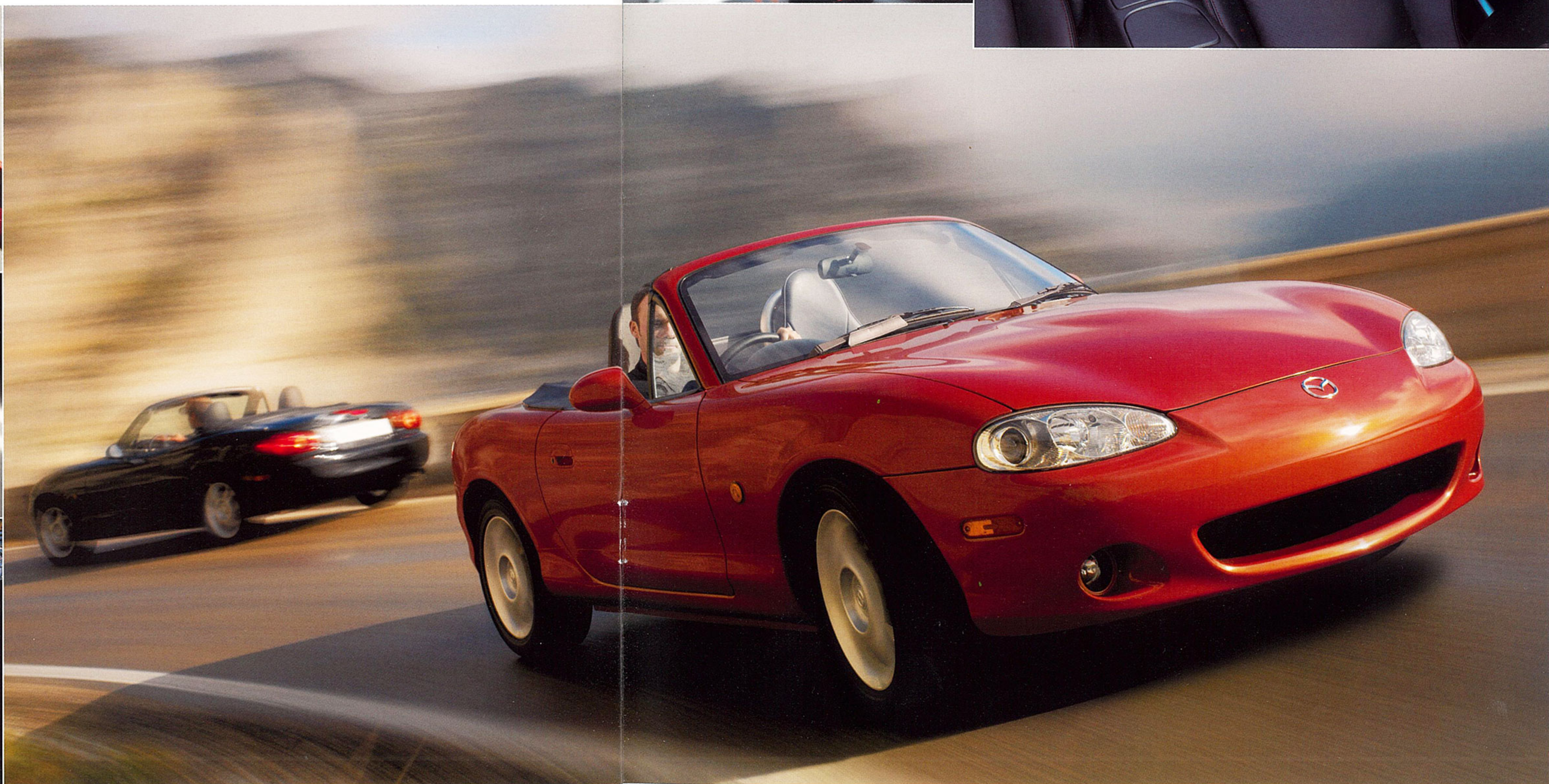
## Make the right statement. The Mazda MX-5 Icon

You can't improve on perfection, but you can make it more unique. And with the special edition Mazda MX-5 Icon, you'll get more than your share of second looks.

A choice of unique mica paints – vibrant Chilli Orange and distinctive Black\* set this Mazda MX-5 Icon apart, while specially designed 15" 5 spoke alloy wheels, front fog lights and stainless steel scuff plates take style a step further. Inside, heated black leather seats are complemented by a leather-covered steering wheel, gear knob and handbrake lever – all with unique orange stitching.

Sometimes we just want something that little bit different. The Mazda MX-5 Icon says 'go for it'.

\*Also available in Sunlight Silver Metallic and Titanium Grey II Metallic.





## Define your style.

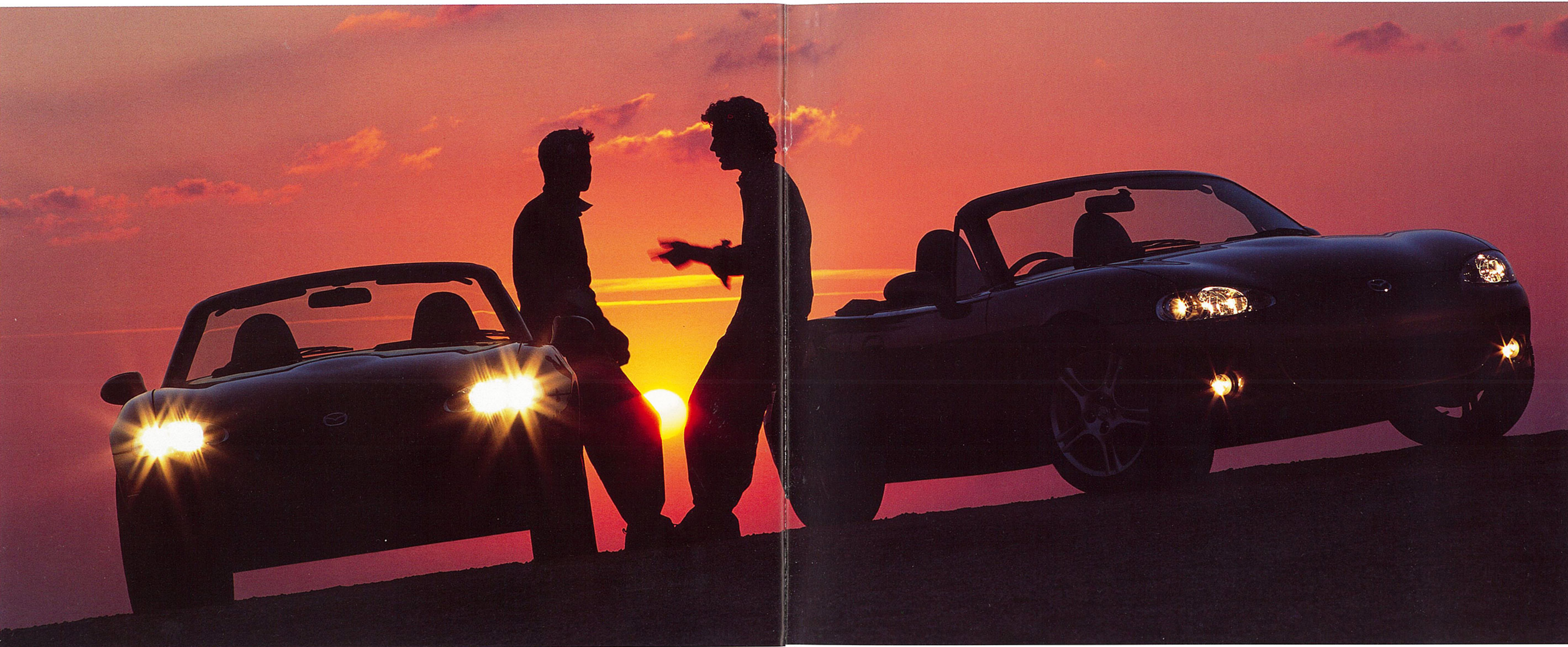
Express your individuality with Mazda MX-5's exclusive range of interior and exterior accessories, from satellite navigation to the innovative Supagard which protects your car against the elements. Listed opposite are just some of the accessories available. Please ask your dealer for more information or view the complete range in the Mazda MX-5 accessories brochure, or online at [www.mazda.co.uk](http://www.mazda.co.uk) – all Mazda accessories offer a 3-year / 60,000-mile warranty when purchased with a new vehicle.

### Accessories:

- |   |   |
|---|---|
| 1 16" 12-spoke alloy wheel.                           | 7 Rear luggage carrier.                         |
| 2 Stainless steel air intake grille.                  | 8 Aluminium gear knob and alloy handbrake grip. |
| 3 Front fog lights.                                   | 9 Aluminium pedal set.                          |
| 4 Supagard, complete protection package for your car. | 10 Smartnav, satellite navigation.              |
| 5 Chrome fuel filler cap.                             |   |
| 6 Style bar with wind deflector.                      |   |







## Mazda Credit.

### Mazda Credit for private customers\*.

Mazda Credit provides you with the opportunity to drive your new Mazda using either the more traditional Mazda Hire Purchase plan or the flexible Mazda MultiOption plan.

Finance is fast and easy to arrange at your Mazda dealer, as dealers are linked directly online to the Mazda Credit system.

### Mazda Insurance\*\*.

Mazda Insurance offers a range of specially tailored motoring-related insurance protection, designed to provide you with total motoring peace of mind. Our cover includes Mazda Motor Insurance, Payment Protection Plan and Guaranteed Asset Protection (GAP).

### Mazda Business Partner\*.

Mazda Business Partner is designed to make your business life easier, by giving you access to a wide range of vehicle funding packages, from purchase plans to contract hire.

As an integral part of Mazda, we are able to offer consistently competitive prices. As everybody's needs are different, we've designed the service to be flexible, so that each package can be tailored to your individual needs.

You can also access more information about Mazda Credit and its finance products at [www.mazda.co.uk](http://www.mazda.co.uk) or by contacting your local Mazda dealer, who will be pleased to provide you with a personalised quotation on the Mazda of your choice.

\*Finance is subject to status. Guarantees / Indemnities may be required. Mazda Credit UK, Central Office, Eagle Way, Brentwood, Essex CM13 3AR.

\*\*Mazda Motor Insurance is underwritten by Zurich Insurance Company, a limited company incorporated in Switzerland. Registered in the canton of Zurich No. CE-02.3.929.583-0. UK branch registered in England, No. BR105. Registered office: Zurich House, Stanhope Road, Portsmouth, Hampshire PO1 1DU. A member of the General Insurance Standards Council. Conditions apply.

Mazda Insurance Payment Protection is underwritten by Norwich Union Insurance Ltd. Registered in England, No. 99122. Registered office: 8 Surrey Street, Norwich NR1 3NG. Member of the General Insurance Standards Council. Authorised and regulated by the Financial Services Authority. Norwich Union Life & Pensions Limited. Registered in England No. 3253947. Registered office: 2 Rougier Street, York YO90 1UU.

Mazda Insurance Finance GAP and Invoice GAP are underwritten by Mapfre Asistencia Agency Ireland. Registered address: 22/26 Prospect Hill, Galway, Ireland. Please note that the information given here is only a brief outline of the cover provided. For full details, please refer to a copy of the policy terms and conditions.

Authorised and Regulated by the Financial Services Authority.







**Your Mazda dealer:**

For further information, please see your Mazda dealer. Cars shown are for illustrative purposes only and may differ from UK specification. Mazda Motors UK Limited reserves the right to introduce changes in specification and equipment due to its ongoing product development. Colour and trim samples shown in this brochure may vary from the actual colours because of the limitations of the printing process. It is recommended that you consult your Mazda dealer when referring to these.

March 2005.

**Internet: [www.mazda.co.uk](http://www.mazda.co.uk)  
Mazda Helpline: 08457 48 48 48**