

2023 MAZDA MX-5



PRICE AND SPECIFICATION GUIDE



WELCOME...

Every Mazda we create is designed around one thing, you. Each car isn't just engineered to move you literally, but to do so emotionally. We call this Jinba Ittai, meaning a sense of oneness between car and driver. Inspired by Japanese tradition it symbolises the oneness between horse and rider, something entirely natural, like a true extension of your being that brings pure driving pleasure.

The pure essence of this can be found in our best-selling two seat sports car, the Mazda MX-5. Featuring a front-engine, rear-wheel drive layout, signature 50:50 weight distribution, famed 6-speed gearbox and free-revving choice of engine's, it's guaranteed to put a smile on your face every time you press the ignition switch. Don't just take our word for it, the Mazda MX-5 has won countless awards, and continues to do so, including the 2016 World Car of the Year and 2016 World Car Design of the Year.



Choice of Bodystyles

There are few pleasures in life like driving on a sunny day with the top down, just absorbing the scenery and feeling the breeze. So which bodystyle will you choose? Will it be the soft top roadster with a roof that can be retracted in seconds, providing that classic roadster look.

Or will it be the eye-catching hardtop RF with its three-piece power retractable roof, open-top motoring is but 13 seconds away. The quick-opening, fully automatic hard top offers additional thermal and sound insulation for year-round enjoyment.

Choice of engines

The key to making our cars fun to drive is to make them lighter. That means a more nimble vehicle with reduced tyre wear, better fuel economy and even less impact on the road surface. This means that you don't need a big, thirsty engine to get sports-car thrills.

The MX-5 is offered with a light and free-revving 1.5 132ps Skyactiv-G engine to provide pure driving pleasure. The emphasis behind the engine and driving characteristics creates a car that moves exactly as the driver expects, with manageable power and lightness that adds to the sheer agility of the car.

However, if you want something with more performance, then the 2.0 184ps Skyactiv-G will satisfy your speed-seeking thrills. Coupled* with a limited slip differential, sports suspension with Bilstein dampers and a front strut brace for extra rigidity, it makes the ideal choice for those seeking a more track focused sports car.

*Excludes Automatic transmission models.



This Price & Specification Guide has been designed to enable you to discover more about the Mazda MX-5 as well about its key features, what they do, as well as key technical information making it easy to find the information you need.

So what are you waiting for...



THE LATEST IN TECHNOLOGY & CONVENIENCE

MAZDA CONNECT

The latest in-car infotainment

Mazda Connect allows for seamless connectivity between you and your Mazda. Information is displayed on a beautiful & clear central 7" screen which is perfectly positioned at eye level.

Access vehicle information and settings, entertainment options including DAB Radio, connect your smartphone via Bluetooth to make and receive calls, access your phonebook, and access the European wide Navigation system which comes with 3-years free map updates.



MULTIMEDIA COMMANDER

Easy to use, driver centric, eyes on the road

The Multimedia Commander provides simple and easy access to the Mazda Connect infotainment system. The tactile feel plays to the senses allowing for ease of use whilst on the move, and more importantly, allows you to keep your eyes on the road.



APPLE CARPLAY® & ANDROID AUTO™ Smarter, safer way to use your smartphone

With Apple CarPlay®, get easy access to Apple Music, Maps, Messages and make phone calls with Siri through the car's Multimedia Commander or voice commands.

Android Auto™ also allows you to access your favourite music and messaging apps, Google Maps and Google Play Music. Google Assistant voice control helps you send and receive messages, make calls, get directions and plan your day while you keep your eyes safely on the road.

BOSE PREMIUM SOUND SYSTEM

Made to move you

Fitted as standard to our Exclusive-Line and Homura grades, the high performance speakers make you feel like you're at the front row of your favourite concert.

Featuring speakers in both the driver & passenger headrests, the Bose Sound System in the MX-5 will make you feel even more immersed in whatever you're listening to, roof up or down.





INTRODUCING THE MAZDA MX-5 132PS KIZUNA

The Mazda MX-5 Kizuna (Japanese translation of enduring bonds) represents the connection that is built between every Mazda MX-5 and its driver. Built using the philosophy of Jinba-Ittai (car and driver as one), power comes from the free-revving 1.5 132ps Skyactiv-G engine with Mazda's fun and engaging 6-speed manual transmission.

Equipped with all of the technology that you will need, the Kizuna includes smart keyless entry, Adaptive Front lighting System, front and rear Smart City Brake Support as well as heated seats for those cooler days.

The system also features a 9-speaker Bose Sound System with wireless Apple CarPlay® and wired Android Auto™ connectivity for the latest in-car entertainment, as well as the Mazda Connect Infotainment system with Mazda Satellite Navigation.



INTRODUCING THE MAZDA MX-5 132PS KIZUNA

Limited to 250 units, the Mazda MX-5 Kizuna is available in a choice of two inclusive exterior colours; Machine Grey or Deep Crystal Blue, matched for the first time to a Premium Blue Soft-top roof and a Light Stone Nappa leather interior which adds to the premium quality and feel.



Model shown: Mazda MX-5 Roadster 132ps Kizuna in Machine Grey. Limited to 170 production models.



Model shown: Mazda MX-5 Roadster 132ps Kizuna in Deep Crystal Blue. Limited to 80 production models.

2023 MAZDA MX-5 PRICING

Roadster Skyactiv-G Petrol

	PRICE	VAT	P11D VALUE	FIRST YEAR VED & DVLA FIRST REG FEE*	ESTIMATED 'ON THE ROAD' RETAIL	CO ₂ EMISSIONS (G/KM)~	BIK TAX (%)^	2023/24 MONTHLY TAX LIABILITY 20%/40%	INSURANCE GROUP
Mazda MX-5 132ps Prime-Line	£21,262.50	£4,252.50	£25,515	£310	£25,825	142	33%	£140/£281	27E
Mazda MX-5 132ps Exclusive-Line	£23,179.17	£4,635.83	£27,815	£310	£28,125	142	33%	£153/£306	27E
Mazda MX-5 184ps Exclusive-Line	£24,758.33	£4,951.67	£29,710	£700	£30,410	155	36%	£178/£357	33A
Mazda MX-5 184ps Homura	£26,425.00	£5,285.00	£31,710	£700	£32,410	155	36%	£190/£381	33A

Limited Edition

Mazda MX-5 132ps Kizuna	£24,962.50	£4,992.50	£29,955	£310	£30,265	142	33%	£165/£330	28E
-------------------------	------------	-----------	---------	------	---------	-----	-----	-----------	-----

Retractable Fastback Skyactiv-G Petrol

Mazda MX-5 RF 132ps Prime-Line	£22,845.83	£4,569.17	£27,415	£310	£27,725	142	33%	£151/£302	25E
Mazda MX-5 RF 132ps Exclusive-Line	£24,762.50	£4,952.50	£29,715	£310	£30,025	142	33%	£163/£327	25E
Mazda MX-5 RF 184ps Exclusive-Line	£26,341.67	£5,268.33	£31,610	£700	£32,310	155	36%	£190/£379	32A
Mazda MX-5 RF 184ps Exclusive-Line Auto	£27,658.33	£5,531.67	£33,190	£1,095	£34,285	171	37%	£205/£409	28E
Mazda MX-5 RF 184ps Homura	£28,175.00	£5,635.00	£33,810	£700	£34,510	155	36%	£203/£406	32A
Mazda MX-5 RF 184ps Homura Auto	£29,075.00	£5,815.00	£34,890	£1,095	£35,985	171	37%	£215/£430	28E

~Figures shown are for comparability purposes; only compare fuel consumption and CO₂ figures with other cars tested to the same technical procedures. These figures may not reflect real life driving results, which will depend upon a number of factors including the accessories fitted (post-registration), variations in weather, driving styles and vehicle load. All figures quoted are derived from the latest WLTP test cycle.

*First year rate Vehicle Excise Duty as of 1 April 2023, includes £55 DVLA first registration fee. ^BIK effective from 6 April 2023.
Pricing and Specification are subject to change. Please speak with your local dealer for latest pricing information.

2023 MAZDA MX-5 GRADE HIGHLIGHTS

PRIME-LINE from £25,825

STANDARD FEATURES:

EXTERIOR

- 16" Black alloy wheels
- Black premium cloth soft-top with heated rear glass (Roadster)
- Body colour power retractable hardtop, with heated rear glass window, electrically-operated (RF)
- LED headlights with auto levelling
- LED daytime running lights
- Coming home/leaving home lights
- Piano Black fashion bars
- Piano Black electrically-adjustable, heated door mirrors
- Twin exhaust system

INTERIOR

- Body-colour co-ordinated interior upper door trim
- Heated seats
- Leather-wrapped handbrake lever
- Leather-wrapped gear shift
- Leather-wrapped steering wheel
- Premium black cloth seat trim with silver stitching

INFOTAINMENT

- AM / FM / DAB radio, with 6 speakers (includes 2 driver's headrest speakers) and USB input
- Mazda Connect multimedia system with 7" Colour centre display and Multimedia Commander
- Mazda Navigation System with European mapping and 3-years free map updates
- Wireless Apple CarPlay® & wired Android Auto™

COMFORT AND CONVENIENCE

- Climate control air-conditioning
- Cruise control with manual speed adjustment and adjustable speed limiter
- Electric windows

SAFETY AND SECURITY

- Deployable Hood System
- Hill Launch Assist
- Remote central locking with deadlocking
- Thatcham accredited alarm & immobiliser



Model shown: Mazda MX-5 Roadster 132ps Prime-Line in Jet Black.

^Leather refers to centre seat facing and side supports.

Pricing and Specification are subject to change. Please speak with your local dealer for latest pricing information.

132PS EXCLUSIVE-LINE from £28,125

IN ADDITION TO PRIME-LINE, 132PS EXCLUSIVE-LINE ADDS:

EXTERIOR

- 16" Silver alloy wheels
- Body coloured electrically-adjustable, heated door mirrors
- Front rain-sensing wipers
- Adaptive Front lighting System
- Dusk-sensing headlights
- Rear parking sensors

INTERIOR

- Auto-dimming rear-view mirror
- Black leather perforated seat trim^ with silver stitching
- Black plastic scuff plates with stainless insert

INFOTAINMENT

- AM / FM / DAB radio, with premium Bose® sound system with 9 speakers (includes 2 driver's and 2 passenger's headrest speakers)

SAFETY AND SECURITY

- Driver Attention Alert
- Lane Departure Warning System
- Smart City Brake Support
 - Front (including autonomous emergency braking)
 - Rear
- Smart keyless entry
- Traffic Sign Recognition



Model shown: Mazda MX-5 RF 132ps Exclusive-Line in Platinum Quartz.

132PS KIZUNA £30,265

LIMITED EDITION – 250 production models
IN ADDITION TO 132PS EXCLUSIVE-LINE, KIZUNA ADDS:

EXTERIOR

- Premium blue cloth soft-top
- Inclusive Machine Grey or Deep Crystal Blue exterior paint finish

INTERIOR

- Light Stone Nappa^ leather seat trim with light stitching



Model shown: Mazda MX-5 Roadster 132ps Kizuna in Machine Grey.

184PS EXCLUSIVE LINE from £30,410

IN ADDITION TO 132PS EXCLUSIVE-LINE,
184PS EXCLUSIVE-LINE ADDS:

EXTERIOR

- 17" Bright alloy wheels
- Adaptive LED Headlights
- Reversing camera

INTERIOR

- Steering wheel mounted paddle shift (Automatic models only)

COMFORT AND CONVENIENCE

- Drive selection switch (Sport mode) (Automatic models only)

PERFORMANCE TECHNOLOGY (184ps Manual only)

- Front strut brace
- Limited Slip Differential
- Sports suspension featuring Bilstein dampers



Model shown: Mazda MX-5 Roadster 184ps Exclusive-Line in Zircon Sand.

HOMURA from £32,410

IN ADDITION TO 184PS EXCLUSIVE-LINE,
HOMURA ADDS:

EXTERIOR

- 17" Gun Metallic BBS Alloy wheels
- Piano Black electrically-adjustable, heated door mirrors
- Two-tone Black & Body colour power retractable hardtop*, with heated rear glass window, electrically-operated (RF)
- Front Red Brembo Brake Calipers (Manual Transmission only)

INTERIOR

- Light Stone Nappa^ leather seat trim with light stitching
- Stainless steel scuff plates featuring 'MX-5' logo



Model shown: Mazda MX-5 RF 184ps Homura in Soul Red Crystal.

*Excludes models painted in Jet Black Mica. ^Leather refers to centre seat facing and side supports.

Pricing and Specification are subject to change. Please speak with your local dealer for latest pricing information.

2023 MAZDA MX-5 INTERIOR TRIMS AND COLOURATION



PREMIUM BLACK CLOTH WITH SILVER STITCHING
AND BODY COLOURED INTERIOR COLOURATION
(Standard on Prime-Line)



PERFORATED BLACK LEATHER[^] WITH SILVER STITCHING
AND BODY COLOURED INTERIOR COLOURATION
(Standard on Exclusive-Line)



PERFORATED LIGHT STONE NAPPA LEATHER[^] WITH
LIGHT STITCHING AND BODY COLOURED INTERIOR
COLOURATION
(Standard on Kizuna & Homura)



[^]Leather refers to centre seat facing and side supports.

2023 MAZDA MX-5 PAINT FINISH OPTIONS



ARCTIC WHITE



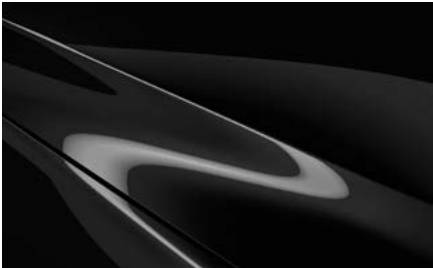
PLATINUM QUARTZ



ZIRCON SAND



DEEP CRYSTAL BLUE*



JET BLACK



MACHINE GREY*



SOUL RED CRYSTAL

Exterior Colours

	BASIC PRICE	VAT	RRP
Arctic White	£0	£0	£0
Platinum Quartz / Zircon Sand / Deep Crystal Blue* / Jet Black	£475.00	£95.00	£570
Machine Grey*	£575.00	£115.00	£690
Soul Red Crystal	£675.00	£135.00	£810

*Free-of-Charge on Kizuna models only.

Mazda Motors UK reserves the right to introduce changes in pricing, specification and equipment due to its ongoing product development. Colour and trim samples shown in this digital brochure may vary from the actual colours because of the variations of resolutions and colours found in various screen displays, and if printed, limitations within the printing process. Models shown may not be to UK specification. It is recommended that you consult your Mazda dealer when referring to these.

2023 MAZDA MX-5 ALLOY WHEELS



16" BLACK ALLOY WHEELS
Standard on Prime-Line



16" BRIGHT ALLOY WHEELS
Standard on 132ps Kizuna & 132ps Exclusive-Line



17" BRIGHT ALLOY WHEELS
Standard on 184ps Exclusive-Line



17" GUN METALLIC BBS ALLOY WHEELS
Standard on Homura*

ACCESSORY ALLOY WHEELS

We have a range accessories available including a range of accessory alloy wheels, so that you can make your Mazda MX-5 more individual to you.

For more information on the entire range of accessories we retail, please [CLICK HERE](#), select your vehicle and visit the 'Options & Accessories' section.

Options & Accessories: A small selection of our range of accessories are shown within this Price and Specification guide. For more information on the entire range of accessories we retail, please visit www.mazda.co.uk/configurator, select your vehicle and visit the 'Options & Accessories' section. The price shown is a non-binding recommendation of Mazda Motors UK, is subject to change and may not include extras. Alloy wheel prices do not include tyres. Accessory fitment costs may differ between Mazda dealers. For further information about Mazda Genuine Accessories and latest pricing including any fitment cost differences please contact your local Mazda dealer.

*Front Red Brembo Brake Calipers with rear Calipers painted Red (184ps Manual only)

2023 MAZDA MX-5 SPECIFICATIONS

Exterior

		Prime-Line	Exclusive-Line	Kizuna	Homura
Roof:	Black premium cloth soft-top with heated rear glass window, manually-operated (Mazda MX-5 Roadster)	●	●	-	●
	Blue premium cloth soft-top with heated rear glass window, manually-operated (Mazda MX-5 Roadster)	-	-	●	-
	Body colour power retractable hardtop, with heated rear glass window, electrically-operated (Mazda MX-5 RF)	●	●	-	-
	Two-tone Black & Body colour power retractable hardtop, with heated rear glass window, electrically-operated (Mazda MX-5 RF)	-	-	-	● ¹⁾
Door mirrors:	Body coloured electrically-adjustable, heated door mirrors	-	●	●	-
	Piano black electrically-adjustable, heated door mirrors	●	-	-	●
Fashion bar cladding:	Piano black	●	●	●	●
Headlights:	Adaptive Front lighting System (AFS) - optimises distribution of light from the headlights according to driving circumstances. Depending on vehicle speed and steering input, the system points the low-beam headlights in the direction the driver intends to travel	-	●	●	-
	Adaptive LED Headlights (ALH) - the ultimate in headlight technology. Combining three technologies: Glare-free High Beams which automatically dim part of the illuminated area to avoid dazzling other drivers, Wide- range Low Beams which light up a wider area at low speeds and Highway mode which helps you see further when travelling at speed	-	●^^	-	●
	Coming home/leaving home lights	●	●	●	●
	Dusk-sensing headlights	-	●	●	●
	LED, with automatic headlight levelling	●	●	●	●
	LED daytime running lights	●	●	●	●
Metallic/Mica/Pearlescent paint:		O	O	● ²⁾	O
Parking aids:	Reversing Camera	-	●^^	-	●
Parking sensors (audible and visual warning):	Rear	-	●	●	●
Tailpipes:	Twin	●	●	●	●
Wheels & Tyres:	16" Black alloy wheels with 195/50 R16 tyres	●	-	-	-
	16" Bright alloy wheels with 195/50 R16 tyres	-	●	●	-
	17" Bright alloy wheels with 205/45 R17 tyres	-	●^^	-	-
	17" Gun Metallic BBS alloy wheels with 205/45 R17 tyres	-	-	-	●
Front Red Brembo Brake Calipers with rear Calipers painted Red		-	-	-	● ³⁾
Wipers:	Front, adjustable speed with intermittent wipe	●	-	-	-
	Front, rain-sensing with adjustable sensitivity and speed	-	●	●	●

● = Standard equipment; - = Not available; O = Option available at additional cost.

¹⁾ RF Homura models finished in Jet Black Mica paint do not feature a two-tone power retractable hardtop.

²⁾ Kizuna features free-of-charge Machine Grey or Deep Crystal Blue paint.

³⁾ Only available on Manual Transmission models.

^^ Only available on 184ps Exclusive-Line.

Interior

		Prime-Line	Exclusive-Line	Kizuna	Homura
Circular air vent surrounds:	Black	•	-	-	-
	Chrome	-	•	•	•
Dashboard panel:	Black vinyl leather	-	•	-	-
	Light Stone vinyl leather	-	-	•	•
Door panel trim:	Exterior body colour co-ordinated	•	•	•	•
	Black vinyl with silver stitching	•	•	-	-
	Light Stone vinyl with light stitching	-	-	•	•
Gear shift:	Leather-wrapped	•	•	•	•
Handbrake lever:	Leather-wrapped	•	•	•	•
Interior mirror:	Auto-dimming rear-view mirror	-	•	•	•
Interior trim:	Premium black cloth trim with silver stitching	•	-	-	-
	Black leather perforated seat trim* with silver stitching	-	•	-	-
	Light Stone Nappa leather perforated seat trim* with light stitching	-	-	•	•
Meter set display:	Multi-dot display tachometer and electric odometer	• ¹⁾	•	•	•
	Tachometer and electric odometer	• ²⁾	-	-	-
	Trip computer	•	•	•	•
Scuff plates:	Black plastic	•	-	-	-
	Black plastic with stainless insert	-	•	•	-
	Stainless steel scuff plates featuring 'MX-5' logo	-	-	-	•
Seats:	Driver's seat manual slide, recline & tilt adjustment	•	•	•	•
	Passenger's seat manual slide & recline adjustment	•	•	•	•
	Heated with 3-stage setting	•	•	•	•
Steering wheel:	Leather-wrapped	•	•	•	•
	Paddle shift for automatic transmission	-	• ³⁾	-	• ³⁾
	Tilt and telescopic adjustment	•	•	•	•
Storage spaces:	Coinbox located on centre console	•	•	•	•
	Rear centre box with lid (lockable)	•	•	•	•
	Two cupholders (detachable)	•	•	•	•
Windblocker:	Standard type (Roadster only)	•	•	•	•
	Transparent (RF only)	•	•	-	•

• = Standard equipment; - = Not available; O = Option available at additional cost.

*Leather refers to centre seat facing and side support.

¹⁾ Available only on RF models.

²⁾ Available only on Roadster models.

³⁾ Available on 184ps Automatic Transmission RF models only.

Infotainment

		Prime-Line	Exclusive-Line	Kizuna	Homura
Wireless Apple CarPlay® & wired Android Auto™:	In-car assistant systems that let you access certain features of your smartphone through Mazda Connect	•	•	•	•
Integrated Bluetooth® ¹⁾ :	Allows audio transfer from Bluetooth® devices, hands-free calling and easy access to phone contacts via steering wheel controls or Multimedia Commander	•	•	•	•
Mazda Connect (Multimedia System):	AM / FM / DAB radio, with 6 speakers (includes 2 driver's headrest speakers)	•	-	-	-
	AM / FM / DAB radio, with premium Bose® sound system with 9 speakers (includes 2 driver's and 2 passenger's headrest speakers)	-	•	•	•
	7" Colour touch-screen display	•	•	•	•
	Auxiliary (AUX)	•	•	•	•
	2 x USB inputs	•	•	•	•
	Steering wheel-mounted audio and Bluetooth® controls ¹⁾	•	•	•	•
Mazda Navigation System:	European mapping with alternative route calculations, point of interest search and 3-years free map updates	•	•	•	•
Multimedia Commander:	Located between the driver and front passenger, the Multimedia Commander allows easy control of the advanced connectivity and infotainment system, with information displayed on the 7" colour touch-screen, includes a separate volume control dial	•	•	•	•

• = Standard equipment; - = Not available.

¹⁾ Please refer to www.mazdahandsfree.co.uk for the latest information regarding compatibility and functionality of mobile and audio devices.

Comfort and Convenience

		Prime-Line	Exclusive-Line	Kizuna	Homura
Air-conditioning:	Climate control	•	•	•	•
Cruise control with manual speed adjustment and adjustable speed limiter		•	•	•	•
Drive selection switch (Automatic only) - When the 'Sport' mode is selected, vehicle's response against accelerator operation is enhanced. This provides additional quick acceleration which may be needed to safely make manoeuvres such as lane changes, merging onto motorways, or passing other vehicles.		-	• ¹⁾	-	• ¹⁾
Electric windows:	With one-touch auto down	•	•	•	•
Engine start / stop button		•	•	•	•
Interior Lighting:	Interior courtesy light	•	•	•	•
Sun visors:	Driver's and passenger's with covered vanity mirrors and driver's ticket holder	•	•	•	•

• = Standard equipment; - = Not available.

¹⁾ Available on 184ps Automatic Transmission RF models only.

Performance Technology

		Prime-Line	Exclusive-Line	Kizuna	Homura
Front strut brace		-	• ¹⁾	-	• ¹⁾
Kinematic Posture Control (KPC):	Applies a very small amount of brake force to the inner wheel during cornering, the resulting brake force pulls the body down, suppressing body roll to improve cornering	•	•	•	•
Limited Slip Differential (LSD)		-	• ¹⁾	-	• ¹⁾
Sports suspension featuring Bilstein dampers		-	• ¹⁾	-	• ¹⁾

• = Standard equipment; - = Not available.

¹⁾ Available on 184ps Manual Transmission models only.

Safety and Security

		Prime-Line	Exclusive-Line	Kizuna	Homura
Airbags:	Front dual stage driver and single stage front passenger	•	•	•	•
	Seat side airbags	•	•	•	•
	Passenger airbag deactivation system (auto switch)	•	•	•	•
Anti-lock Braking System (ABS)		•	•	•	•
Deployable Hood System (DHS):	Active Bonnet - raises at the rear when a collision with a pedestrian is detected, creating a space between itself and the engine	•	•	•	•
Driver Attention Alert (DAA): Designed to reduce accidents caused by inattentiveness due to driver fatigue. The system watches inputs and the vehicle's movements in the early stages before fatigue is a factor		-	•	•	•
Dynamic Stability Control (DSC)		•	•	•	•
Emergency Stop Signalling system (ESS)		•	•	•	•
Emergency tyre repair kit		•	•	•	•
Hill Launch Assist (HLA):	When pulling away on an incline, HLA helps prevent the car from rolling backwards when the driver moves their foot from the brake to the accelerator pedal by maintaining an automatic brake	•	•	•	•
ISOFIX child seat anchorage; attached to front passenger seat		•	•	•	•
Lane Departure Warning System (LDWS)	The system detects the line markings on the road surface, and instantly warns you in case of unintentional lane departure	-	•	•	•
Pre-crash safety: Smart City Brake Support (SCBS)	Front (including autonomous emergency braking) (SCBS) - designed to reduce the risk of accidents by helping the driver avoid frontal collisions at slow speeds	-	•	•	•
	Rear (SCBS-R) - designed to reduce the risk of accidents by helping the driver avoid rear-end collisions at slow speeds	-	•	•	•
Remote central locking with deadlocking and remote boot release		•	•	•	•
Smart keyless entry:	Allows opening and locking of the vehicle without removing the key from your pocket or bag	-	•	•	•
Thatcham Accredited alarm and immobiliser		•	•	•	•
Traction Control System (TCS)		•	•	•	•
Traffic Sign Recognition (TSR)		-	•	•	•
Tyre Pressure Monitoring System (TPMS)		•	•	•	•

• = Standard equipment; - = Not available.

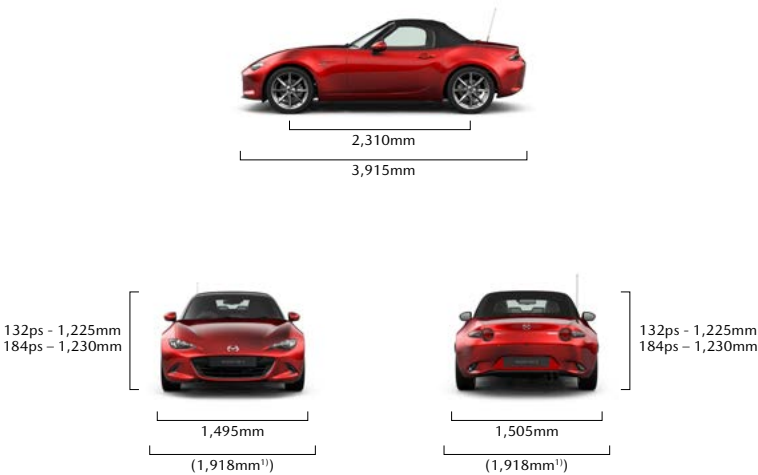
2023 MAZDA MX-5 ROADSTER TECHNICAL INFORMATION

Model availability	1.5 SKYACTIV-G	2.0 SKYACTIV-G
	Petrol RWD	Petrol RWD
	132ps Manual	184ps Manual
Prime-Line	•	-
Exclusive-Line	•	•
Kizuna - Limited Edition	•	-
Homura	-	•

Dimensions		
Overall length / width ¹⁾ (mm)	3,915 / 1,735 (1,918) ¹⁾	
Height (mm)	132ps – 1,225	184ps – 1,230
Wheelbase (mm)	2,310	
Ground clearance between the axles – unladen (mm)	132ps – 141	184ps – 149
Front track / Rear track (mm)	1,495 / 1,505	
Front headroom / leg room / shoulder room (mm)	950 / 1,096 / 1,325	
Cargo volume, acc. to VDA (l) ²⁾ :	130	
Brake Type - Front / Rear	Ventilated / Solid	
Brake Dimensions (mm) - Front / Rear	132ps – 258/255	184ps – 280/280
Steering		
Steering gear	Electric Power Assist Steering (Rack and Pinion)	
Wall-to-wall turning circle (M)	10.0	

¹⁾ Vehicle width excludes mirrors. Figures in brackets includes mirrors.

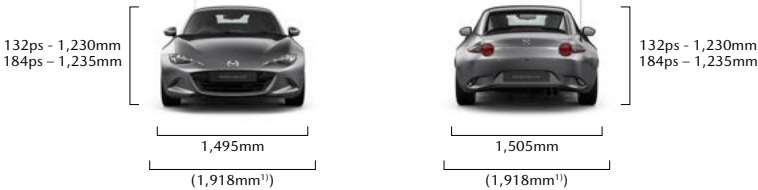
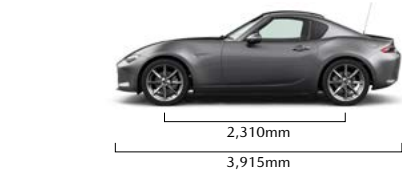
²⁾ Includes underfloor storage.



2023 MAZDA MX-5 RF TECHNICAL INFORMATION

Model availability	1.5 SKYACTIV-G	2.0 SKYACTIV-G	2.0 SKYACTIV-G
	Petrol RWD	Petrol RWD	Petrol RWD
	132ps Manual	184ps Manual	184ps Automatic
Prime-Line	•	-	-
Exclusive-Line	•	•	•
Homura	-	•	•

Dimensions		
Overall length / width ¹⁾ (mm)	3,915 / 1,735 (1,918) ¹⁾	
Height (mm)	132ps – 1,230	184ps – 1,235
Wheelbase (mm)	2,310	
Ground clearance between the axles – unladen (mm)	132ps – 141	184ps – 147
Front track / Rear track (mm)	1,495 / 1,505	
Front headroom / leg room / shoulder room (mm)	935.7 / 1,096 /1,325	
Cargo volume, acc. to VDA (l) ²⁾ :	127	
Brake Type - Front / Rear	Ventilated / Solid	
Brake Dimensions (mm) - Front / Rear	132ps – 258/255	184ps – 280/280
Steering		
Steering gear	Electric Power Assist Steering (Rack and Pinion)	
Wall-to-wall turning circle (M)	10.0	



¹⁾ Vehicle width excludes mirrors. Figures in brackets includes mirrors.

²⁾ Includes underfloor storage.

2-door Roadster/ Retractable Fastback (RF)		1.5 Skyactiv-G		2.0 Skyactiv-G		2.0 Skyactiv-G	
		Petrol 132ps		Petrol 184ps		Petrol 184ps	
		Manual		Manual		Automatic	
Displacement (cc)		1496		1998		1998	
Bore x Stroke (mm)		74.5 x 85.8		83.5 x 91.2		83.5 x 91.2	
Valves per cylinder		4		4		4	
Compression ratio		13:1		13:1		13:1	
FUEL SAVING TECHNOLOGY							
i-stop system	Saves fuel by switching off the engine when the car stops	•		•		•	
i-ELOOP	Continuously recovers kinetic energy as the vehicle decelerates and reuses it as electricity	•		•		•	
PERFORMANCE							
Maximum power output (ps (KW) / rpm)		132 (97) / 7000		184 (135) / 7000		184 (135) / 7000	
Max. torque (Nm / rpm)		152 / 4500		205 / 4000		205 / 4000	
		ROADSTER	RF	ROADSTER	RF	RF	
Acceleration (0-62 mph in seconds)		8.3	8.7	6.5	6.8	7.9	
Top Speed (mph)		127	126	136	137	124	
FUEL ECONOMY AND CO ₂ EMISSIONS							
WLTP fuel consumption ¹⁾ mpg (l/100km)	Low	35.8 (7.9)		30.7 (9.2)		26.2 (10.8)	
	Medium	47.9 (5.9)		44.1 (6.4)		37.7 (7.5)	
	High	52.3 (5.4)		47.9 (5.9)		43.5 (6.5)	
	Extra High	42.8 (6.6)		40.4 (7.0)		37.7 (7.5)	
	Combined	44.8 (6.3)		40.9 (6.9)		37.2 (7.6)	
WLTP CO ₂ emissions ¹⁾ (g/km)		142		155		171	
EC emission level		Euro Stage6d					
Recommended fuel		Unleaded 95 RON					
Fuel tank capacity (litres)		45		45		45	
WEIGHTS		ROADSTER	RF	ROADSTER	RF	RF	
Maximum kerb weight (kg) incl. driver (75kg) ²⁾		1,107	1,141	1,126 - 1,127	1,168 - 1,170	1,194	
Permitted gross vehicle weight (kg)	Total	1,230	1,280	1,260	1,305	1,320	
	Front/rear	625 / 605	635 / 645	645 / 615	645 / 660	655 / 665	

• = Standard equipment, – = Not available.

¹⁾ Figures shown are for comparability purposes; only compare fuel consumption and CO₂ figures with other cars tested to the same technical procedures. These figures may not reflect real life driving results, which will depend upon a number of factors including the accessories fitted (post-registration), variations in weather, driving styles and vehicle load. All figures quoted are derived from the latest WLTP test cycle.

2023 MAZDA MX-5 ACCESSORIES AND EQUIPMENT OVERVIEW

We know how complicated buying a new car can be when it comes to deciphering the latest technology. That's why we have taken the time to provide you with some clarity on what's available on the Mazda MX-5, to help you make the right choice as to which grade will suit your lifestyle best.

Within this section we provide information on just some of our latest options & accessories, details on our engine technology, as well as information on our Skyactiv-Vehicle Dynamics and our Advanced Safety Technology.

We don't only make cars that are involving and easy to operate, we do this with our Price & Specification guide too to enable you to make the best decision.

Then all that is left to do is to experience the Mazda MX-5 for yourself. To find your local dealer and to arrange a Test Drive, [CLICK HERE](#)



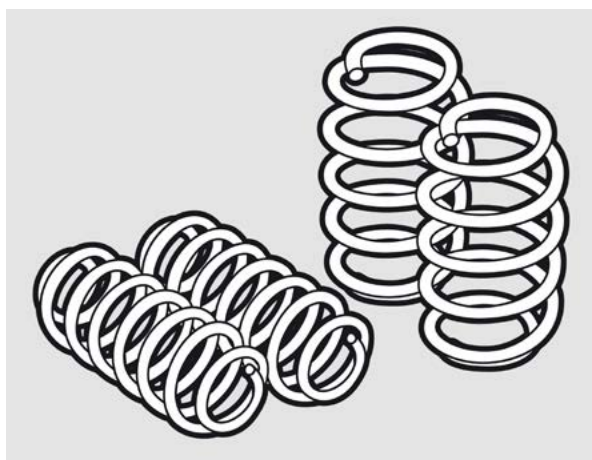
OPTIONS & ACCESSORIES



FRONT AIRDAM SKIRT
Roadster & RF - £360.61



REAR AIRDAM SKIRT
Roadster & RF - £415.40



EIBACH LOWERING SUSPENSION KIT
Roadster & RF - £479.73



BASTUCK STAINLESS STEEL SPORTS EXHAUST
Roadster & RF - £952.02



REAR BOOT LID SPOILER – BLACK
Roadster & RF - £347.05

Options & Accessories: A small selection of our range of accessories are shown within this Price and Specification guide. For more information on the entire range of accessories we retail, please visit www.mazda.co.uk/configurator, select your vehicle and visit the 'Options & Accessories' section. The price shown is a non-binding recommendation of Mazda Motors UK, is subject to change and may not include extras. Alloy wheel prices do not include tyres. Accessory fitment costs may differ between Mazda dealers. For further information about Mazda Genuine Accessories and latest pricing including any fitment cost differences please contact your local Mazda dealer.

OPTIONS & ACCESSORIES



CENTRE CONSOLE SHELF NET
Roadster & RF - £69.26



CLEAR WIND BLOCKER
Roadster - £229.70



COLOUR CODED KEY FOB COVER
Roadster & RF - £106.96



ALLOY PEDAL SET
Manual - £215.60
Automatic - £139.97



LUXURY FLOOR MATS
Roadster & RF - £70.00



OUTDOOR VEHICLE COVER
Roadster & RF - £203.12

Options & Accessories: A small selection of our range of accessories are shown within this Price and Specification guide. For more information on the entire range of accessories we retail, please visit www.mazda.co.uk/configurator, select your vehicle and visit the 'Options & Accessories' section. The price shown is a non-binding recommendation of Mazda Motors UK, is subject to change and may not include extras. Alloy wheel prices do not include tyres. Accessory fitment costs may differ between Mazda dealers. For further information about Mazda Genuine Accessories and latest pricing including any fitment cost differences please contact your local Mazda dealer.

SKYACTIV ENGINE TECHNOLOGY

SKYACTIV-G

Both the 1.5 132ps and 2.0 184ps Skyactiv-G engine's are highly-efficient direct-injection petrol engines that achieve impressive engine efficiency thanks to the high compression combustion, resulting in excellent fuel economy and low CO₂ emissions.

The 1.5 132ps Skyactiv-G has been designed to provide pure driving pleasure. With the light weight that the 1.5 engine provides, the MX-5 weighs just 1,107kg*. Combined with its 50:50 weight distribution and free-revving engine, this creates a car that moves exactly as the driver expects, with manageable power and lightness that adds to the sheer agility of the car. It is all the MX-5 you will ever need.

However, for those that demand more power, the 184ps version will provide you with the thrills that you are looking for. Our latest version of the 2.0 engine features a number of upgrades to increase performance and efficiency over our previous 160ps SKYACTIV-G engine. The result is an engine that has a redline of 7,500 rpm, a 0-62mph acceleration time from 6.5 seconds and more efficient combustion.

i-ELOOP

Helped by the MX-5's lightness, performance hasn't come at the cost of efficiency with the introduction of Mazda's i-ELOOP kinetic recovery and i-stop (stop-start) technology which is equipped as standard, resulting in a fun, yet economical drive.

The i-ELOOP system recovers energy while decelerating and braking. the recovered energy is used to power electrical systems such as the audio, air conditioning and headlights to put less stress on the engine.

i-stop

While conventional idling stop systems rely on a starter motor to restart the engine, Mazda's i-stop restarts the engine through combustion. The result is a quick and quiet engine re-start compared to other systems and a saving in fuel.



SKYACTIV-VEHICLE DYNAMICS: TRANSMISSIONS, CHASSIS AND BODY

TRANSMISSIONS

SKYACTIV-MT is a light and compact manual transmission system that combines superior fuel economy with the crisp shifting feel that is expected of a sports car, ensuring perfect control.

Also available* is Mazda's highly efficient, 6-speed SKYACTIV-DRIVE automatic transmission. Featuring the best attributes of CVT, Dual Clutch and conventional automatic transmissions, SKYACTIV-DRIVE provides you with a direct feel with smooth gear shifts.



SKYACTIV-CHASSIS

Providing a lightweight chassis that delivers driving pleasure and comfort, leading to that pure 'Jinba-ittai' oneness between car and driver. The perfectly fine tuned chassis provides our famed driving experience of agility at low and medium speeds, and stability at motorway speeds for both driving pleasure and comfort.



SKYACTIV-BODY

For a car to excel in its basic functions - accelerate, turn and stop - it must have a lean body, but also be sturdy to ensure safety. Mazda MX-5's body has been designed around these elements leading to a light, rigid and robust body that ensures safe and joyful driving.

When a crash is unavoidable, the Skyactiv-Body delivers excellent collision protection with the unique structure and lightweight high-strength materials ensure the MX-5's body absorbs and disperses impact energy to prevent cabin deformation.



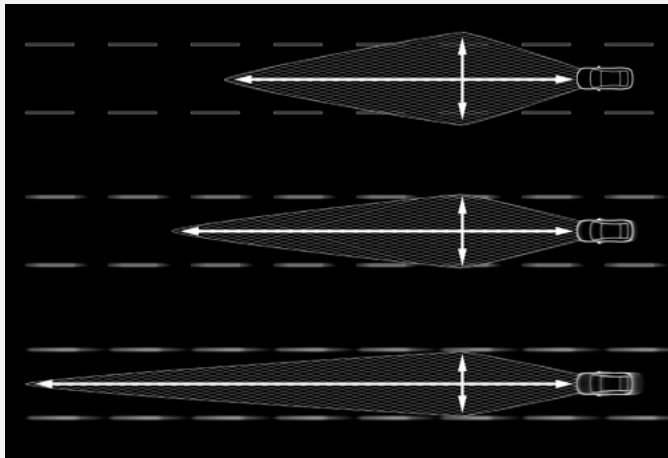
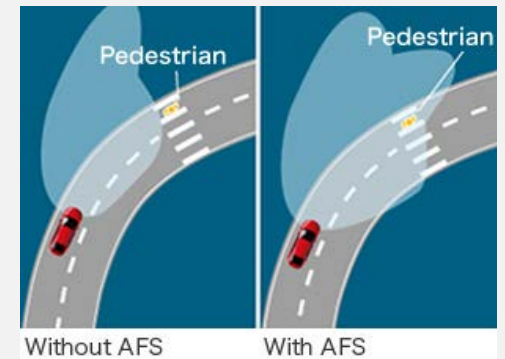
*SKYACTIV-DRIVE Automatic Transmission available on RF 184ps Exclusive-Line and RF 184ps Homura grades

ADVANCED TECHNOLOGY

ADAPTIVE FRONT LIGHTING SYSTEM

One of the most important factors in mitigating driver fatigue and increasing safety during night driving is providing a well-illuminated field of view. The Adaptive Front lighting System optimises distribution of light from the headlights according to driving circumstances. Depending on vehicle speed and steering input, the system points the low-beam headlights in the direction the driver intends to travel.

(Standard on 132ps Exclusive-Line models only)



ADAPTIVE LED HEADLIGHTS

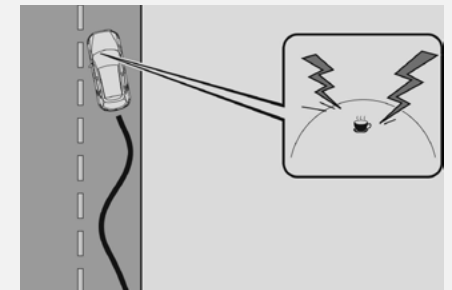
Mazda's Adaptive LED Headlights provide the ultimate in headlight technology, lighting up the road ahead as if it were daytime and allowing anybody to enjoy safe and stress-free driving at any time of day. The system increases visibility at night to help drivers stay vigilant by combining three technologies: Wide-range Low Beams which light up a wider area at low speeds, Highway mode which helps you see further when travelling at speed, and Glare-free High Beams which automatically dim part of the illuminated area to avoid dazzling other drivers.

(Standard on 184ps Exclusive-Line & Homura models)

DRIVER ATTENTION ALERT

Designed to reduce accidents caused by inattentiveness due to driver fatigue. The system comes into play at speeds above 40mph and begins to "learn" the driver's habits, watching inputs and the vehicle's movements in the early stages before fatigue is a factor. Later, if the system detects changes in vehicle behaviour that suggest the driver may be losing concentration, it will suggest a rest stop by sounding a chime and displaying a warning in the Multi-Information Display.

(Standard on Exclusive-Line models and up)



ADVANCED TECHNOLOGY



KINEMATIC POSTURE CONTROL

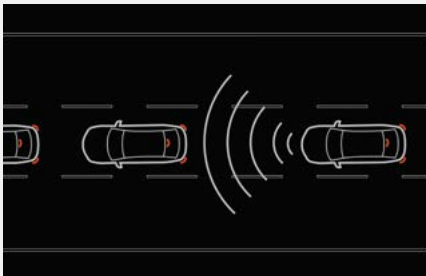
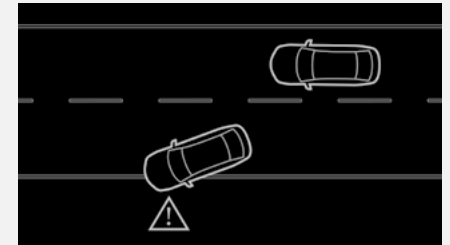
All Mazda MX-5 models feature Kinematic Posture Control (KPC). Mazda's KPC system is designed to increase stability during cornering without impacting the purity of the Mazda MX-5's handling and driver engagement. The KPC system applies a very small amount of brake force to the inner/unloaded rear wheel during cornering. The resulting brake force pulls the body down, suppressing body roll to provide more reassuring cornering.

(Standard across the range)

LANE DEPARTURE WARNING SYSTEM

Designed to prevent your vehicle from inadvertently straying from its lane. A front view camera monitors the road ahead and calculates the car's position relative to the lane markings. If the system detects the vehicle is moving out of its lane unintentionally, an audible alert will sound to alert the driver to take corrective action.

(Standard on Exclusive-Line models and up)



SMART CITY BRAKE SUPPORT – FRONT

Alerts the driver of a possible collision using the warning indications in the display and a warning sound if the front radar sensor and Forward Sensing Camera determine that there is the possibility of a collision with a vehicle ahead, pedestrian, or a bicycle. Furthermore, if a collision is unavoidable, the automatic brake control is performed to reduce damage in the event of a collision.

SMART CITY BRAKE SUPPORT – REAR

Reduces damage in the event of a collision by operating the brake control when the system's sensors detect an obstruction at the rear.

(Standard on Exclusive-Line models and up)

MAZDA SERVICES

MAZDA SERVICE PLANS

MODEL	ENGINE	PRICE~	MONTHLY PAYMENT~
Mazda MX-5	SKYACTIV-G	£759	£23.00

~Service plan pricing and monthly payment pricing is for new vehicles up to one month of age since first registration. Both are inclusive of VAT.

Take the hassle out of servicing your car by opting for a Mazda Service Plan from your Mazda dealer. For a one off payment or manageable monthly sum, your annual Mazda servicing can be covered for up to 3 years. Contact your Mazda dealer for more information on the options available. At participating dealers only.

The maximum service interval for your Mazda is 12,500 miles or 12 months whichever occurs first, however, the servicing intervals may reduce based on the style of driving and the conditions under which your vehicle is operated.



Mazda Service Plans cover parts, labour & fluids at the prevailing VAT rate for the first three scheduled services. You have the choice of paying for your Mazda Service Plan with a one-off payment, or by monthly Direct Debit payments over the duration of the Plan. Please contact your Mazda Authorised Dealer for more information. The servicing for Mazda Service Plans can only be carried out at a Mazda Authorised Dealer. At participating Dealers only and plan must be activated prior to the vehicle's first service.

VEHICLE TAX RATES Tax year 2023-24

CO ₂ EMISSIONS FIGURE (G/KM)	PETROL & RDE2 DIESEL - FIRST YEAR RATE	ALTERNATIVE FUEL CARS - FIRST YEAR RATE	STANDARD RATE (12 months)	
			PETROL/DIESEL CARS	ALTERNATIVE FUEL CARS
0	£0	£0	£180	£170
1-50	£10	£0	£180	£170
51-75	£30	£20	£180	£170
76-90	£130	£120	£180	£170
91-100	£165	£155	£180	£170
101-110	£185	£175	£180	£170
111-130	£210	£200	£180	£170
131-150	£255	£245	£180	£170
151-170	£645	£635	£180	£170
171-190	£1,040	£1,030	£180	£170
191-225	£1,565	£1,555	£180	£170
226-255	£2,220	£2,210	£180	£170
Over 255	£2,605	£2,595	£180	£170

First-year rate is paid when first registering a vehicle and is for the first 12 months Vehicle Excise Duty. After the first 12 months, the standard rate applicable at that time is payable. Vehicles with a list price >£40k will be subject to a premium of £390 over the Standard Rate for 5 years from the start of the second licence.

MAZDA FINANCIAL SERVICES

Mazda Financial Services offers a variety of finance and insurance products to suit the needs of both private and business customers. With our wide range of plans and services, no-one is more committed to delivering complete motoring confidence and total peace of mind than Mazda and Mazda Financial Services.

MAZDA INSURANCE

When you buy your new Mazda from a Mazda franchised dealer, we'll give you free comprehensive Driveaway Insurance so you can get on the road there and then. Upgrade to our annual cover and benefit from our Mazda Accident Repair Promise all year round. In the event of an accident, unlike most other insurers, we guarantee to repair your Mazda at a Mazda Approved Bodyshop using only Mazda Genuine Parts. This helps to protect your Mazda's safety rating, resale value and manufacturer warranty. Plus, you'll also get windscreen damage cover, EU cover and a complimentary courtesy car. We'll even pay your cancellation fee if you're insured elsewhere*. Eligibility criteria, terms and conditions apply.

Ask your dealer or call Mazda Insurance on 0330 102 7995.

Get a quote online at www.mazdacarinsurance.co.uk

Mazda Insurance is arranged and administered by Verex Insurance Services Ltd which arranges policies from a panel of insurers.

*Offer not available online. Offer conditions apply.

MAZDA EXCESS RETURN VOUCHER

When you apply for Free Driveaway Insurance for your new Mazda, you'll also receive a free 1-year Excess Return voucher which pays back up to £250 of your insurance excess cost, regardless of who you're insured with, if you use our Call Mazda First service. If you have a Mazda Excess Return voucher and need to make an insurance claim, simply Call Mazda First before your insurer on 0800 015 0367.

FREE MAZDA ACCIDENT AFTERCARE

In the event of an accident, Call Mazda First 0800 015 0367 before your insurer for free 24-hour Accident AfterCare and to redeem your £250 Excess Return voucher.

Our dedicated case handlers will liaise with your insurer and arrange Mazda Genuine Parts and repairs at a Mazda Approved Bodyshop, keeping your Mazda 100% Mazda and maintaining your Mazda warranties. We'll also provide accident recovery if your Mazda isn't driveable and a free courtesy car during the repair. Terms and conditions apply.

Save 0800 015 0367 to your mobile phone.

TAX FREE – DIPLOMATIC AND MILITARY SALES

For further information contact your Mazda dealer or contact Mazda on 03457 48 48 48.

MOTABILITY

For all Motability enquiries please contact your Mazda dealer or contact Mazda on 03457 48 48 48.

This price list, dated 19 April 2023, supersedes all previous price lists. It includes changes to Vehicle Excise Duty as confirmed in the October 2018 budget affecting estimated 'On the Road' prices. Final prices shown are estimated 'On the Road' prices and are inclusive of number plates, 12 months' Vehicle Excise Duty and first registration fee. Certain models may be subject to changes in CO₂ emission levels and Vehicle Excise Duty Bands. Due to ongoing updates the specification (including fuel consumption, CO₂ emissions and equipment) of the vehicle you order and receive may be different to that detailed in this guide. Please speak to your dealer for the latest information. Images may not be to UK specification. Finance subject to status. Terms and conditions apply. Applicants must be 18 or over. Guarantee may be required. Mazda Financial Services, RH1 1SR.

DRIVE TOGETHER

Mazda Motors UK Limited reserves the right to introduce changes in specification and equipment due to its ongoing product development. Prices are subject to change without prior notice.

Bose, Apple CarPlay® and Android Auto™ are registered trademarks in the U.S. and other countries. Used with permission. The Bluetooth® word mark and logos are owned by the Bluetooth SIG, Inc. and any use of such marks by Mazda Motor Corporation is under license.

Other trademarks and trade names are those of their respective owners.

www.mazda.co.uk

Mazda Helpline: 03457 48 48 48

Effective from 19 April 2023